

# EXPLODED VIEW & PARTS LISTING

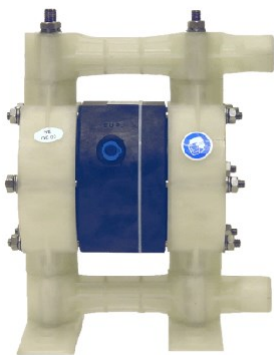
## Air Operated Double Diaphragm pump

Model : NDP-15BP.

**Yamada** Europe B.V.



Material: PPG (Reinforced Polypropylene)



### To Purchase:

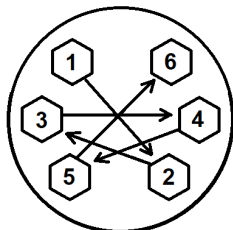
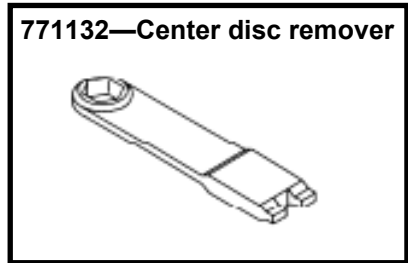
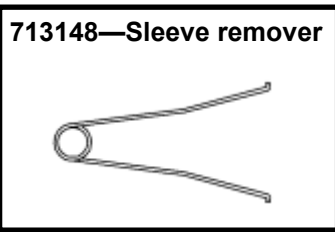
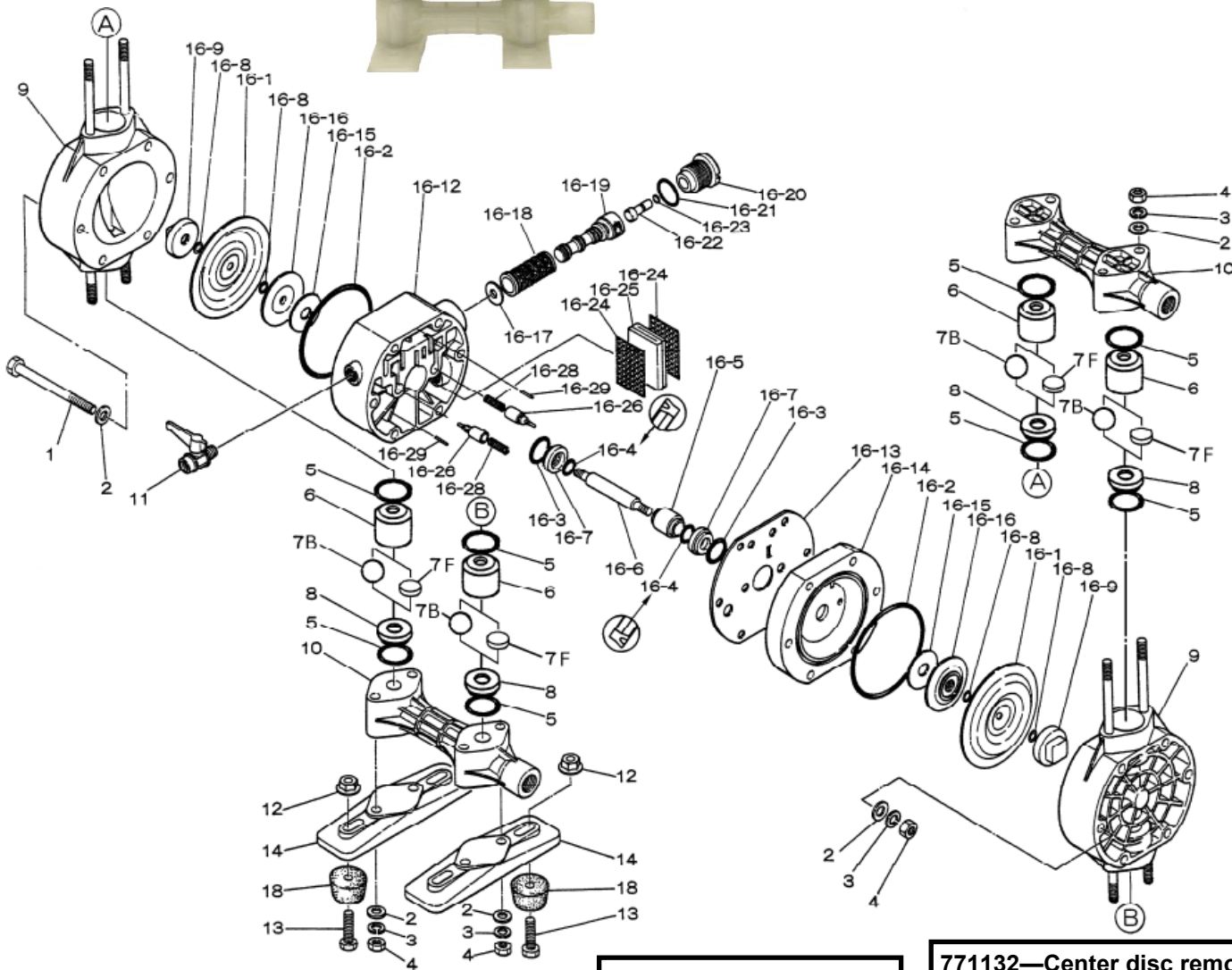
☎ 0031 (0)74 242 2032

✉ [sales@yamada.nl](mailto:sales@yamada.nl)

### More information:

▶ YouTube: [@yamadapump](https://www.youtube.com/@yamadapump)

🌐 [yamada-europe.com](http://yamada-europe.com)



**Tighting torque for:**  
 Center rod: 14Nm  
 Out chambers: 12Nm  
 Manifolds: 12Nm

**Special tools (sold seperately)**  
 713148 Sleeve remover  
 771132 Center disc remover

**Miscellaneous:**  
 Assembly oil: use turbine oil none additional class 1  
 Equiv. to ISO VGA32 grade  
 Use Urea grease grade NLGI No. 2

# EXPLODED VIEW & PARTS LISTING

Model : NDP-15BP.

**Yamada** Europe B.V.



## Air Operated Double Diaphragm pump

Material: PPG (Reinforced Polypropylene)



### DIAPHRAGM

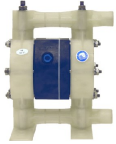
Design #

CR	EPDM	NBR	HYTREL	SANTOPRENE	VITON	PTFE	PTFE-EPDM
BPC	BPE	BPN	BPH	BPS	BPV	BPT	BPTU
YE Original	YE Original	YE Original	YE Original	854910	852352	852352	YE Original

REF. No.	DESCRIPTION	Q'TY.	Part No.	Part No.	Part No.	Part No.	Part No.	Part No.	Part No.	Part No.	Part No.
1	BOLT	6	684310	684310	684310	684310	684310	684310	684310	684310	684310
2	PLAIN WASHER	20	631329	631329	631329	631329	631329	631329	631329	631329	631329
3	SPRING WASHER	14	681300	681300	681300	681300	681300	681300	681300	681300	681300
4	NUT	14	687229	687229	687229	687229	687229	687229	687229	687229	687229
5	O RING	8	640027	684115	640027	640027	684115	642027	643027	643027	643027
6	BALL GUIDE	4	771806	771806	771806	771806	771806	771806	771806	771806	771806
7B	BALL	4	771526	771979	771525	773125	773169	771524-V	771524	771524	771524
8	VALVE SEAT	4	780162	780162	780162	780162	780162	780162	780162	780162	780162
9	OUT CHAMBER	2	780119	780119	780119	780119	780119	780119	780119	780119	780119
10	MANIFOLD	2	780026	780026	780026	780026	780026	780026	780026	780026	780026
11	VALVE	1	686825	686825	686825	686825	686825	686825	686825	686825	686825
12	FLANGED NUT	4	682276	682276	682276	682276	682276	682276	682276	682276	—
13	BOLT	4	611152	611152	611152	611152	611152	611152	611152	611152	611152
14	BASE	2	771352	771352	771352	771352	771352	771352	771352	771352	771352
16	BODY ASSY	1	802989	803504	802991	802990	803504	802988	802988	802988	802988
16- 1	DIAPHRAGM	2	770971	771848	770973	771372	771972	770971-V	770933	770933	833027
16- 2	O RING	2	640144	640144	640144	640144	640144	640144	640144	640144	640144
16- 3	O RING	2	640020	640020	640020	640020	640020	640020	640020	640020	640020
16- 4	PACKING	2	684284	684284	684284	684284	684284	684284	684284	684284	684284
16- 5	GUIDE	1	771337	771337	771337	771337	771337	771337	771337	771337	771337
16- 6	CENTER ROD	1	710578	710578	710578	710578	710578	710578	710578	710578	716573
16- 7	BUSHING	2	771336	771336	771336	771336	771336	771336	771336	771336	771336
16- 8	O RING	4	640005	643005	640005	—	—	642005	643005	643005	—
16- 9	CENTER DISK	2	770968	770968	770968	770968	770968	770968	770968	770968	—
16-12	BODY A	1	780028	780028	780028	780028	780028	780028	780028	780028	780028
16-13	GASKET	1	771347	771347	771347	771347	771347	771347	771347	771347	771347
16-14	BODY B	1	780030	780030	780030	780030	780030	780030	780030	780030	780030
16-15	CUSHION	2	771342	771342	771342	771342	771342	771342	771342	771342	771342
16-16	CENTER DISK	2	771344	771344	771344	771344	771344	771344	771344	771344	020109
16-17	CUSHION	1	771483	771483	771483	771483	771483	771483	771483	771483	771483
O-rings sleeve	16-18	SLEEVE ASSY	1	804249	804249	804249	804249	804249	804249	804249	804249
16-19	C SPOOL ASSY	1	802835	802835	802835	802835	802835	802835	802835	802835	802835
16-20	CAP	1	771695	771695	771695	771695	771695	771695	771695	771695	771695
16-21	O RING	1	640022	640022	640022	640022	640022	640022	640022	640022	640022
16-22	RESET BUTTON	1	771350	771350	771350	771350	771350	771350	771350	771350	771350
16-23	O RING	1	640002	640002	640002	640002	640002	640002	640002	640002	640002
16-24	MESH	2	771589	771589	771589	771589	771589	771589	771589	771589	771589
16-25	MUFFLER FELT	1	771465	771465	771465	771465	771465	771465	771465	771465	771465
16-26	PILOT VALVE ASSY	2	832141	832141	832141	832141	832141	832141	832141	832141	832141
16-28	SPRING	2	710577	710577	710577	710577	710577	710577	710577	710577	710577
16-29	SPRING PIN	2	632752	632752	632752	632752	632752	632752	632752	632752	632752
18	RUBBER FOOT	4	770551	770551	770551	770551	770551	770551	770551	770551	770551
KIT	DIAPHRAGM		K15D-PC	K15D-PE	K15D-PN	K15D-PH	K15D-PS	K15D-PV	K15D-PT	K15D-PTU	K15D-PTU
KIT	VALVE		K15V-BPC	K15V-BPE	K15V-BPN	K15V-BPH	K15V-BPS	K15V-BPV	K15V-BPT	K15V-BPT	K15V-BPT
KIT	WET END REPAIR		K15-PC-B	K15-PE-B	K15-PN-B	K15-PH-B	K15-PS-B	K15-PV-B	K15-PT-B	K15-PT-B	K15-PTU-B
KIT	AIR MOTOR		K10/15-AM								
KIT	AIR MOTOR SEAL		K10/15-AMS								

# EXPLODED VIEW & PARTS LISTING

## Air Operated Double Diaphragm pump



**MODEL :** NDP-15BP.

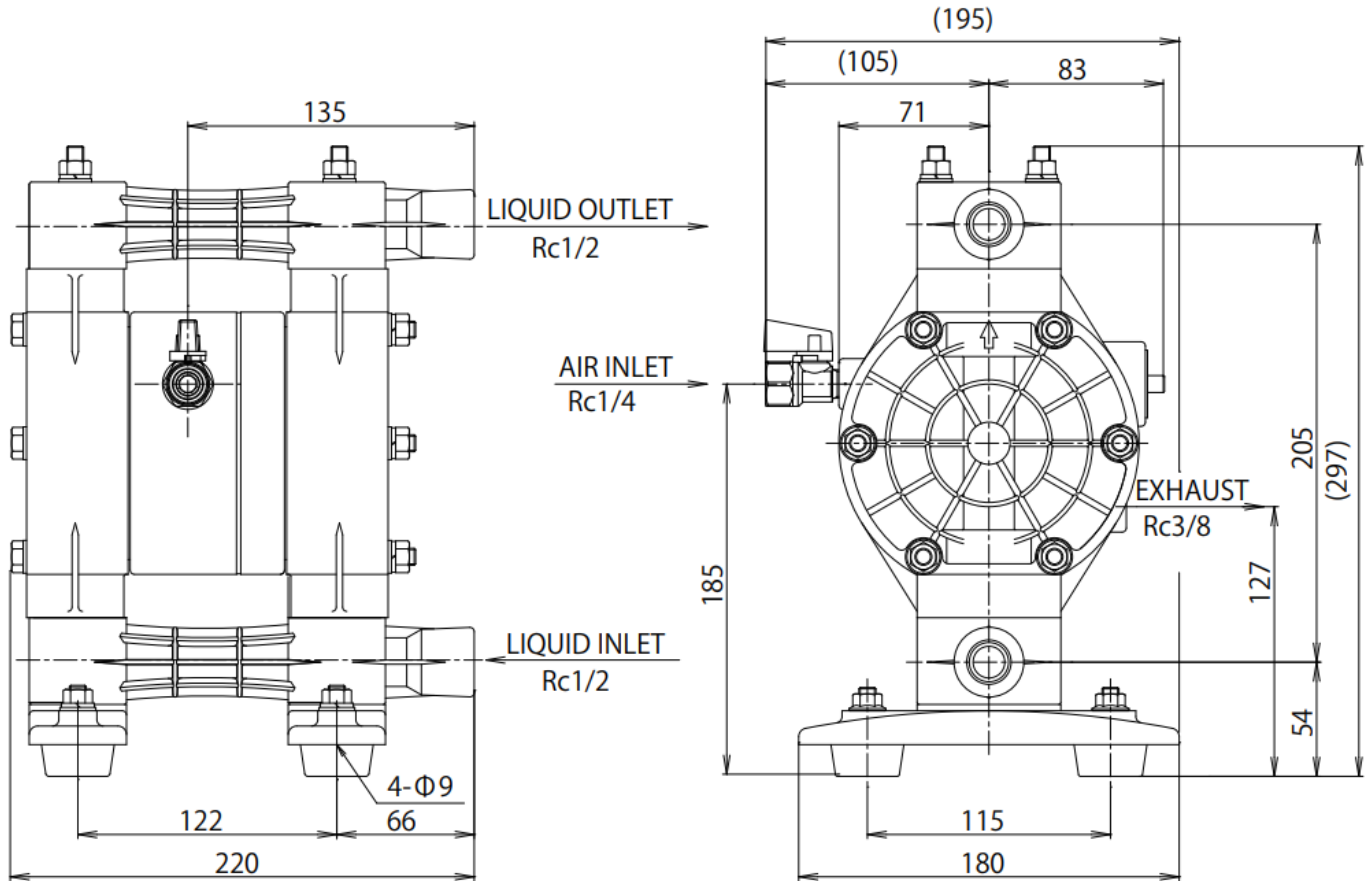
Model : NDP-15BP.

**Yamada** Europe B.V.



Material: PPG (Reinforced Polypropylene)

Diaphragm options	CR, EPDM, NBR, TPEE, TPO, FPM	PTFE	TU
Max performance	45 L/min	40 L/min	40 L/min
Manifold connection	Rc 1/2"		
Net Weight	3,5 kg		



**0,1MPa = 1Bar**

**NDP-15BPTU**

