

EXPLODED VIEW & PARTS LISTING

Air Operated Double Diaphragm pump

Model : NDP-15FP.

Yamada Europe B.V.



Material: PPG (Reinforced Polypropylene)

713148—Sleeve remover



To Purchase:

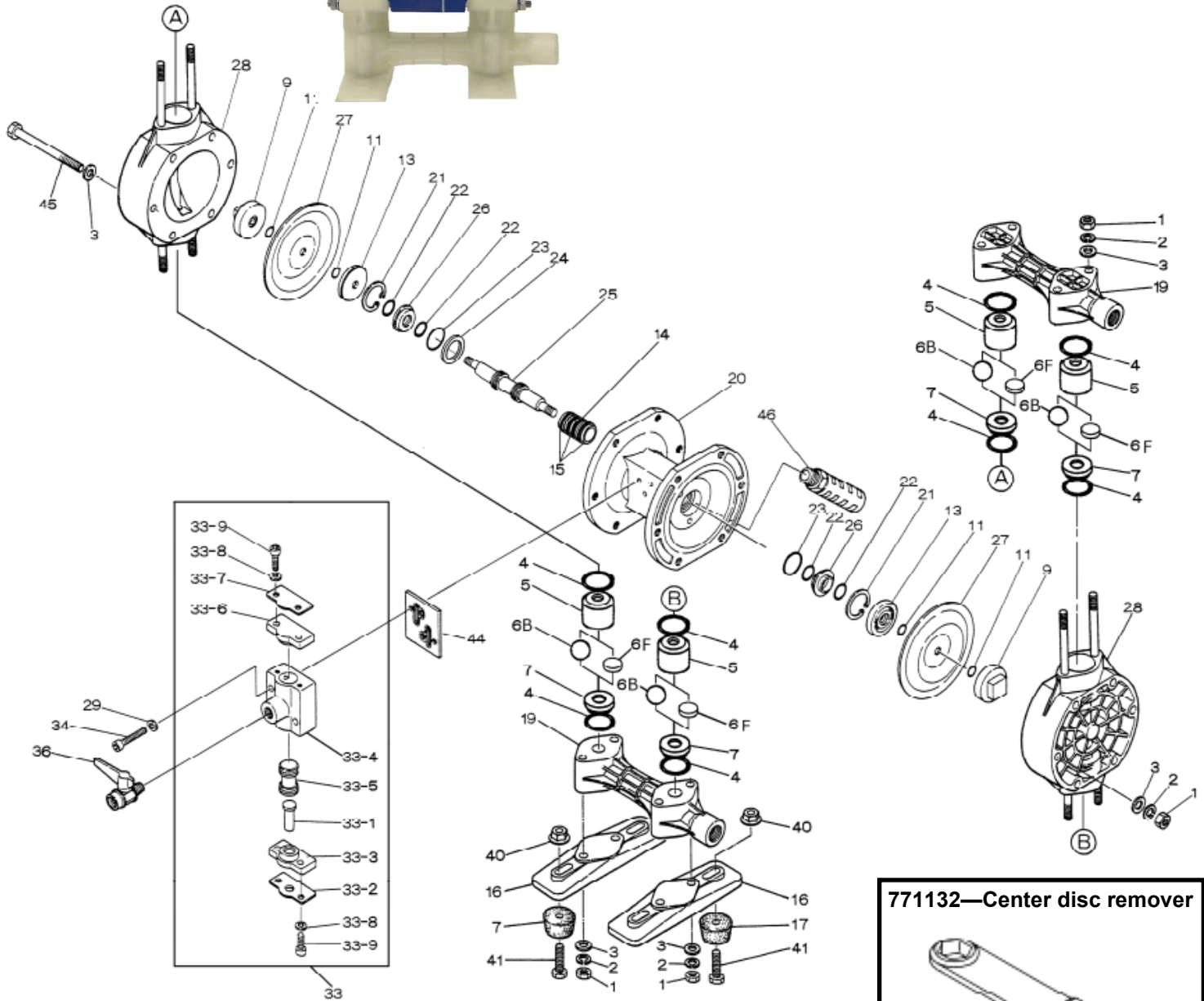
0031 (0)74 242 2032

sales@yamada.nl

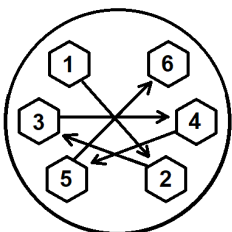
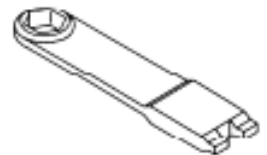
More information:

YouTube: [@yamadapump](https://www.youtube.com/@yamadapump)

yamada-europe.com



771132—Center disc remover



Tighting torque for:

Center rod: 14Nm
 Out chambers: 12Nm
 Manifolds: 12Nm

Special tools (sold seperately)

713148 Sleeve remover
 771132 Center disc remover

Miscellaneous:

Assembly oil: use turbine oil none additional class 1
 Equiv. to ISO VGA32 grade
 Use Urea grease grade NLGI No. 2

EXPLODED VIEW & PARTS LISTING

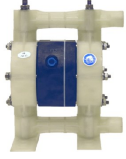
Air Operated Double Diaphragm pump

Model : NDP-15FP.

Yamada Europe B.V.



Material: PPG (Reinforced Polypropylene)



DIAPHRAGM

Design

| | | | CR | EPDM | NBR | HYTREL | SANTOPRENE | PTFE | PTFE-EPDM |
|----------------|------------------|-------------|------------|-------------|----------|----------|------------|----------|-------------|
| | | | FPC | FPE | FPN | FPH | FPS | FPT | FPTU |
| | | | 851903 | YE Original | 851943 | 851905 | 852683 | 851698 | YE Original |
| REF. No. | DESCRIPTION | Q'TY. | Part No. | Part No. | Part No. | Part No. | Part No. | Part No. | Part No. |
| 1 | BOLT | 6 | 684310 | 684310 | 684310 | 684310 | 684310 | 684310 | 684310 |
| 2 | PLAIN WASHER | 20 | 631329 | 631329 | 631329 | 631329 | 631329 | 631329 | 631329 |
| 3 | SPRING WASHER | 14 | 681300 | 681300 | 681300 | 681300 | 681300 | 681300 | 681300 |
| 4 | NUT | 14 | 687229 | 687229 | 687229 | 687229 | 687229 | 687229 | 687229 |
| 5 | O RING | 8 | 640027 | 684115 | 640027 | 640027 | 684115 | 643027 | 643027 |
| 6 | VALVE GUIDE | 4 | 771341 | 771341 | 771341 | 771341 | 771341 | 771341 | 771341 |
| 7F | FLAT VALVE | 4 | 771340 | 771340 | 771340 | 771340 | 771340 | 771340 | 771340 |
| 8 | VALVE SEAT | 4 | 771345 | 771345 | 771345 | 771345 | 771345 | 771345 | 771345 |
| 9 | OUT CHAMBER | 2 | 780119 | 780119 | 780119 | 780119 | 780119 | 780119 | 780119 |
| 10 | MANIFOLD | 2 | 780026 | 780026 | 780026 | 780026 | 780026 | 780026 | 780026 |
| 11 | VALVE | 1 | 686825 | 686825 | 686825 | 686825 | 686825 | 686825 | 686825 |
| 12 | FLANGED NUT | 4 | 682276 | 682276 | 682276 | 682276 | 682276 | 682276 | — |
| 13 | BOLT | 4 | 611152 | 611152 | 611152 | 611152 | 611152 | 611152 | 611152 |
| 14 | BASE | 2 | 771352 | 771352 | 771352 | 771352 | 771352 | 771352 | 771352 |
| 16 | BODY ASSY | 1 | 802989 | 803504 | 802991 | 802990 | 803504 | 802988 | 802988TU |
| 16- 1 | DIAPHRAGM | 2 | 770971 | 771848 | 770973 | 771372 | 771972 | 770933 | 833027 |
| 16- 2 | O RING | 2 | 640144 | 640144 | 640144 | 640144 | 640144 | 640144 | 640144 |
| 16- 3 | O RING | 2 | 640020 | 640020 | 640020 | 640020 | 640020 | 640020 | 640020 |
| 16- 4 | PACKING | 2 | 684284 | 684284 | 684284 | 684284 | 684284 | 684284 | 684284 |
| 16- 5 | GUIDE | 1 | 771337 | 771337 | 771337 | 771337 | 771337 | 771337 | 771337 |
| 16- 6 | CENTER ROD | 1 | 710578 | 710578 | 710578 | 710578 | 710578 | 710578 | 716573 |
| 16- 7 | BUSHING | 2 | 771336 | 771336 | 771336 | 771336 | 771336 | 771336 | 771336 |
| 16- 8 | O RING | 4 | 640005 | 643005 | 640005 | — | — | 643005 | — |
| 16- 9 | CENTER DISK | 2 | 770968 | 770968 | 770968 | 770968 | 770968 | 770968 | — |
| 16-12 | BODY A | 1 | 780028 | 780028 | 780028 | 780028 | 780028 | 780028 | 780028 |
| 16-13 | GASKET | 1 | 771347 | 771347 | 771347 | 771347 | 771347 | 771347 | 771347 |
| 16-14 | BODY B | 1 | 780030 | 780030 | 780030 | 780030 | 780030 | 780030 | 780030 |
| 16-15 | CUSHION | 2 | 771342 | 771342 | 771342 | 771342 | 771342 | 771342 | 771342 |
| 16-16 | CENTER DISK | 2 | 771344 | 771344 | 771344 | 771344 | 771344 | 771344 | 020109 |
| 16-17 | CUSHION | 1 | 771483 | 771483 | 771483 | 771483 | 771483 | 771483 | 771483 |
| O-rings sleeve | 16-18 | SLEEVE ASSY | 1 | 804249 | 804249 | 804249 | 804249 | 804249 | 804249 |
| 16-19 | C SPOOL ASSY | 1 | 802835 | 802835 | 802835 | 802835 | 802835 | 802835 | 802835 |
| 16-20 | CAP | 1 | 771695 | 771695 | 771695 | 771695 | 771695 | 771695 | 771695 |
| 16-21 | O RING | 1 | 640022 | 640022 | 640022 | 640022 | 640022 | 640022 | 640022 |
| 16-22 | RESET BUTTON | 1 | 771350 | 771350 | 771350 | 771350 | 771350 | 771350 | 771350 |
| 16-23 | O RING | 1 | 640002 | 640002 | 640002 | 640002 | 640002 | 640002 | 640002 |
| 16-24 | MESH | 2 | 771589 | 771589 | 771589 | 771589 | 771589 | 771589 | 771589 |
| 16-25 | MUFFLER FELT | 1 | 771465 | 771465 | 771465 | 771465 | 771465 | 771465 | 771465 |
| 16-26 | PILOT VALVE ASSY | 2 | 832141 | 832141 | 832141 | 832141 | 832141 | 832141 | 832141 |
| 16-28 | SPRING | 2 | 710577 | 710577 | 710577 | 710577 | 710577 | 710577 | 710577 |
| 16-29 | SPRING PIN | 2 | 632752 | 632752 | 632752 | 632752 | 632752 | 632752 | 632752 |
| 18 | RUBBER FOOT | 4 | 770551 | 770551 | 770551 | 770551 | 770551 | 770551 | 770551 |
| KIT | DIAPHRAGM | | K15D-PC | K15D-PE | K15D-PN | K15D-PH | K15D-PS | K15D-PT | K15D-PTU |
| KIT | VALVE | | K15V-PN | K15V-PE | K15V-PN | K15V-PN | K15V-PE | K15V-PT | K15V-PT |
| KIT | WET END REPAIR | | K15-PC | K15-PE | K15-PN | K15-PH | K15-PS | K15-PT | K15-PTU |
| KIT | AIR MOTOR | | K10/15-AM | | | | | | |
| KIT | AIR MOTOR SEAL | | K10/15-AMS | | | | | | |

EXPLODED VIEW & PARTS LISTING

Air Operated Double Diaphragm pump



MODEL : NDP-15FP.

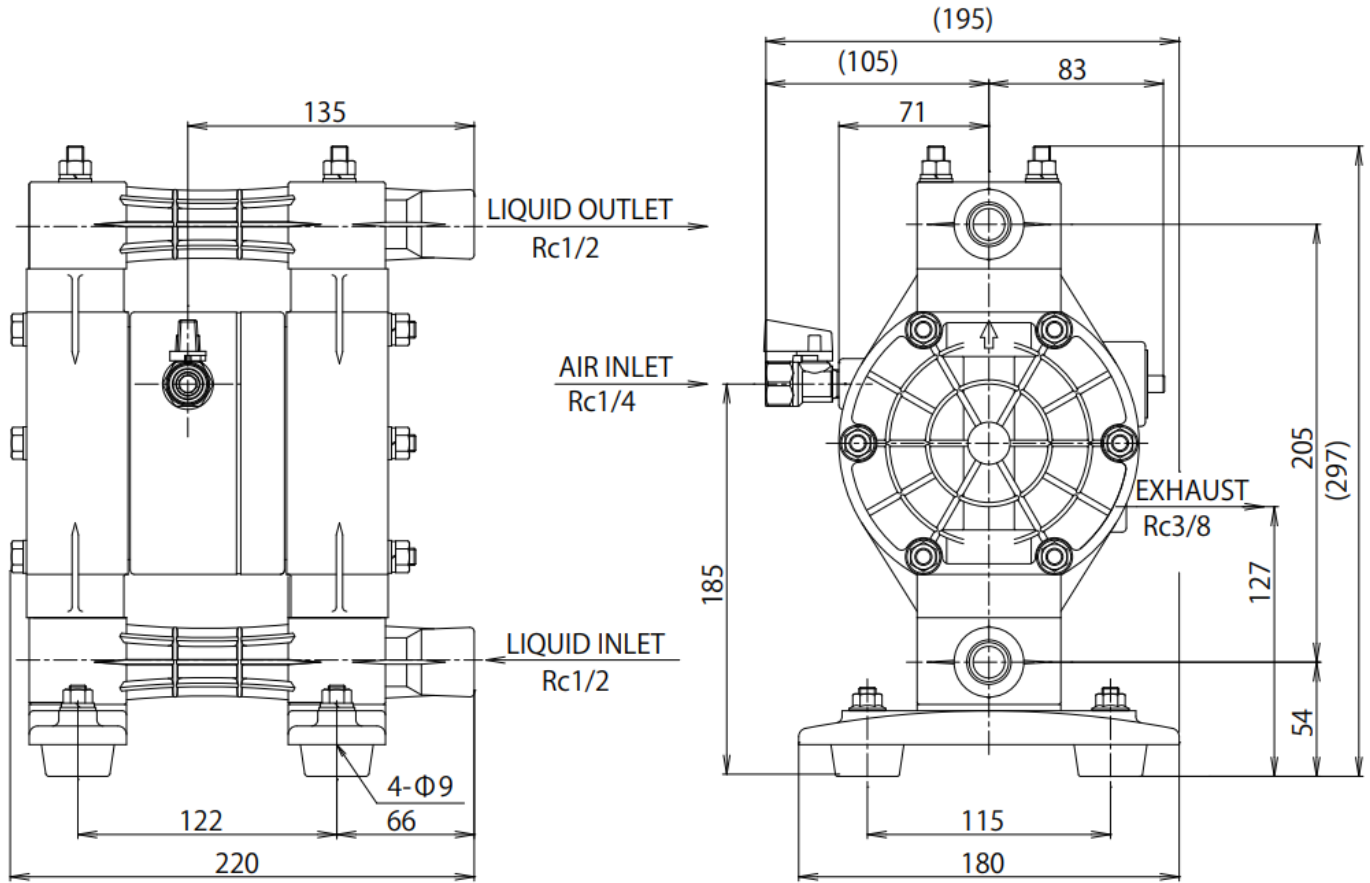
Model : NDP-15FP.

Yamada Europe B.V.



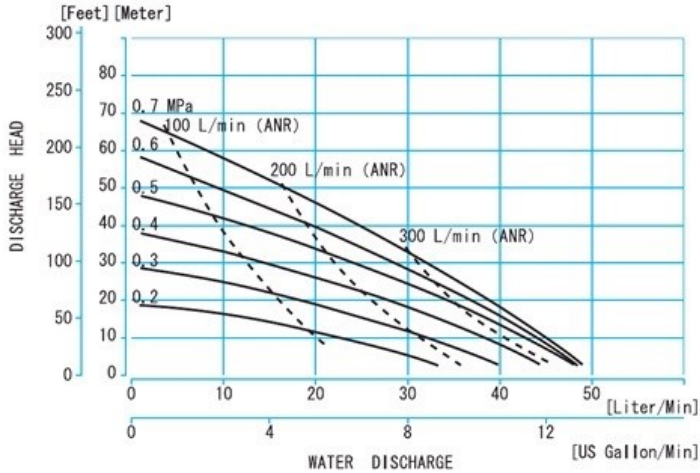
Material: PPG (Reinforced Polypropylene)

| | | | |
|---------------------|--------------------------|----------|----------|
| Diaphragm options | CR, EPDM, NBR, TPEE, TPO | PTFE | TU |
| Max performance | 45 L/min | 40 L/min | 40 L/min |
| Manifold connection | Rc 1/2" | | |
| Net Weight | 3,5 kg | | |



0,1MPa = 1Bar

NDP-15FP□,FV□



NDP-15FPTU

