

EXPLODED VIEW & PARTS LISTING

Air Operated Double Diaphragm pump

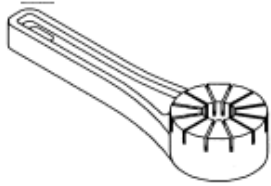
Model : NDP-32BA.

Yamada Europe B.V.



Material: Aluminium (ADC12)

771244—Centre disc remover



To Purchase:

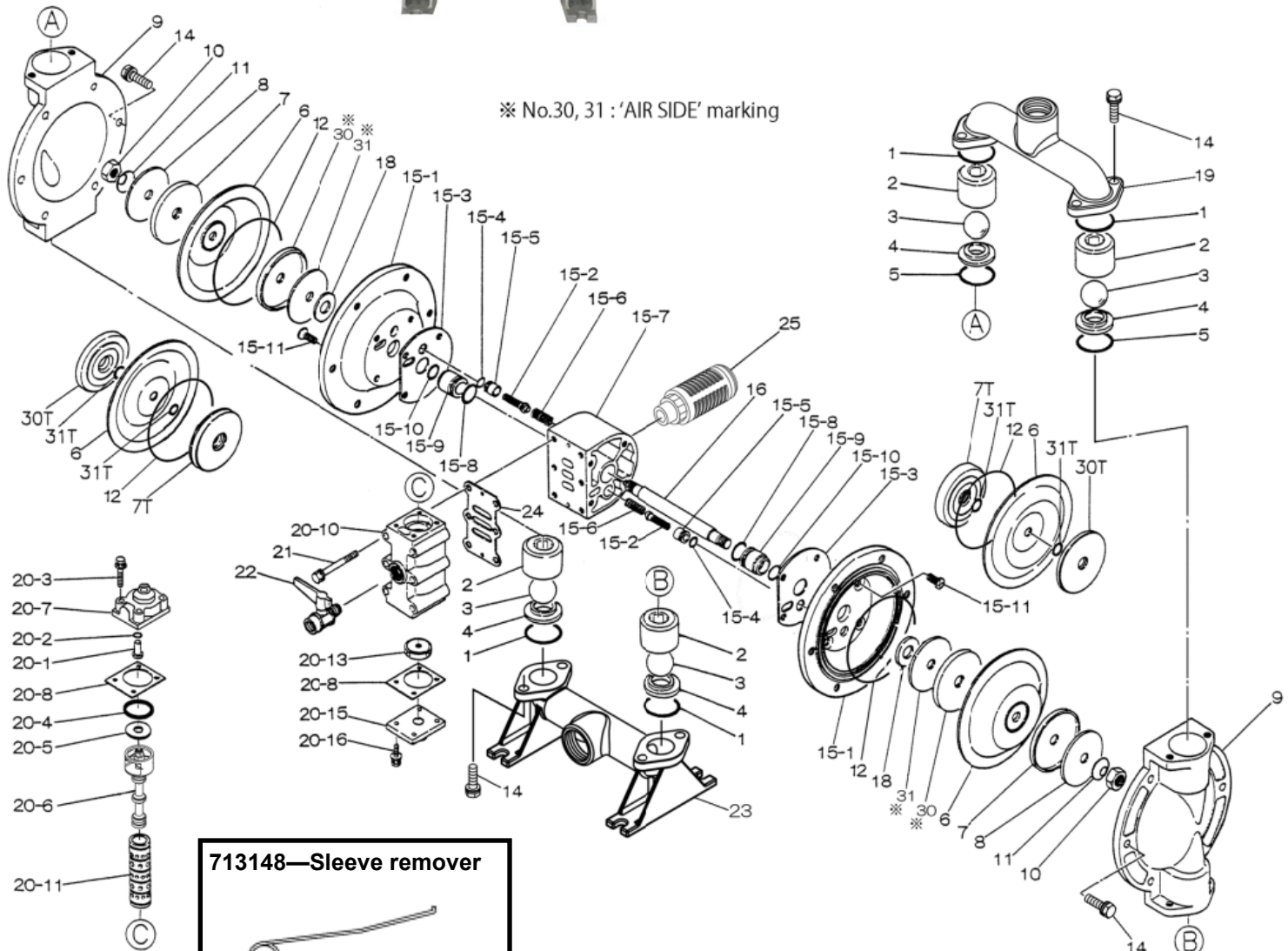
More information:

☎ 0031 (0)74 242 2032

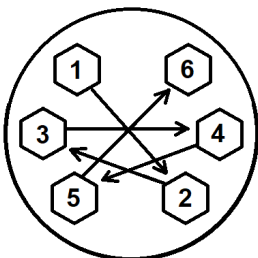
▶ YouTube: [@yamadapump](https://www.youtube.com/@yamadapump)

✉ sales@yamada.nl

🌐 yamada-europe.com



713148—Sleeve remover



Tighting torque for:

Center rod: 40 Nm
 Out chamber: 10/20 Nm
 Manifold: 10/35 Nm

Special tools (sold seperately)

713148 Sleeve remover

Miscellaneous:

Assembly oil: use turbine oil none additional class 1
 Equiv. to ISO VGA32 grade
 Use Urea grease grade NLGI No. 2

EXPLODED VIEW & PARTS LISTING

Model : NDP-32BA.

Yamada Europe B.V.



Air Operated Double Diaphragm pump

Material: Aluminium (ADC12)

DIAPHRAGM

Design #

NBR	PTFE
BAN	BAT
855051	855052



REF. No.	DESCRIPTION	Q'TY.	Part No.	Part No.
1	O RING	4	640044	643044
2	BALL GUIDE	4	711702	711702
3	BALL	4	770581	770691
4	VALVE SEAT	4	590087	590087
5	O RING	2	640134	771130
6	DIAPHRAGM	2	772962	771110
7,7T	CENTER DISK	2	709151	709459
8	WASHER	2	709150	—
9	OUT CHAMBER	2	711687	711687
10	NUT	2	682263	682263
11	CONED DISC SPRING	2	682730	682730
12	O RING	2	—	640154
14	BOLT & WASHER	20	686361	686361
15	BODY ASSY	1	804664	804664
15- 1	AIR CHAMBER	2	715939	715939
15- 2	PILOT VALVE ASSY	2	802360	802360
15- 3	GASKET	2	771057	771057
15- 4	O RING	2	640009	640009
15- 5	VALVE SEAT	2	771945	771945
15- 6	SPRING	2	708666	708666
15- 7	BODY	1	709154	709154
15- 8	O RING	2	685276	685276
*15- 9	THROAT BEARING	2	772703	772703
15-10	PACKING	2	685414	685414
15-11	BOLT	8	682486	682486
16	CENTER ROD	1	709162	709162
18	CUSHION	2	771054	771054
19	OUT MANIFOLD	1	716452	716452
20	VALVE BODY ASSY	1	802361	802361
20- 1	RESET BUTTON	1	709161	709161
20- 2	O RING	1	640005	640005
20- 3	BOLT & WASHER	4	682704	682704
20- 4	PACKING	1	771241	771241
20- 5	WASHER	1	715961	715961
20- 6	C SPOOL ASSY	1	802400	802400
20- 7	CAP	1	710221	710221
20- 8	GASKET	2	771240	771240
20-10	VALVE BODY	1	711638	711638
20-11	SLEEVE ASSY	1	803931	803931
20-13	CUSHION	1	771914	771914
20-15	CAP	1	709305	709305
20-16	BOLT & WASHER	4	682262	682262
21	BOLT & WASHER	6	682265	682265
22	VALVE	1	686969	686969
23	IN MANIFOLD	1	716453	716453
24	GASKET	1	771056	771056
25	MUFFLER	1	680913	680913
30,30T	CENTER DISK	2	716258	709327
31	WASHER	2	716259	—
31T	O RING	4	—	643013
KIT	AIR MOTOR			
KIT	AIR MOTOR SEAL			

! * Throat bearing position 15-9, 772703 is only available as an assembly. Positions 15-8, 15-9 and 15-10. Article code 020703

EXPLODED VIEW & PARTS LISTING

Air Operated Double Diaphragm pump



MODEL : NDP-32BA.

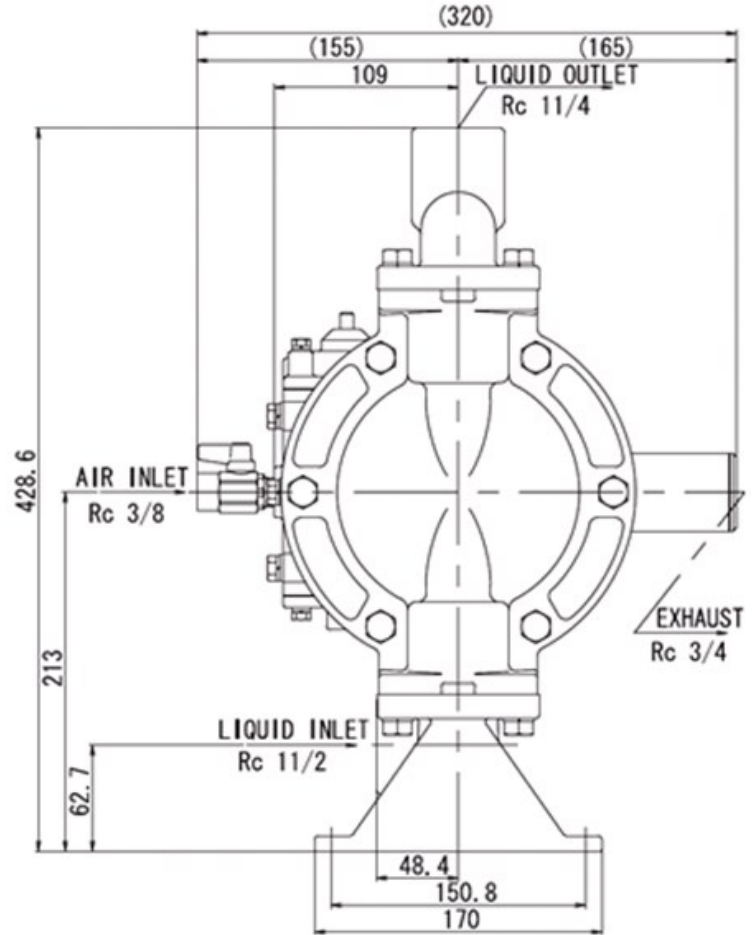
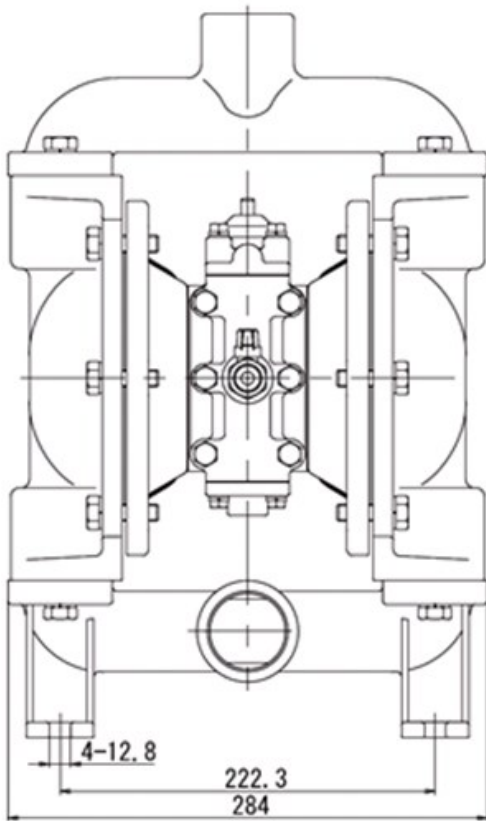
Model : NDP-32BA.

yamada Europe B.V.



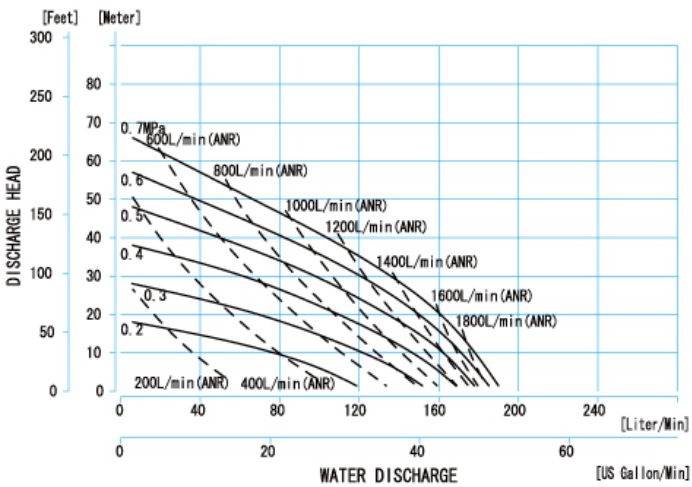
Material: Aluminium (ADC12)

Diaphragm options	NBR	PTFE
Max performance	190 L/min	165 L/min
Manifold connection	Rc 11/4"	
Net Weight	12,0 kg	



0,1MPa = 1Bar

NDP-32BA.



NDP-32BAT

