

# EXPLODED VIEW & PARTS LISTING

## Air Operated Double Diaphragm pump

Model : NDP-40BF.

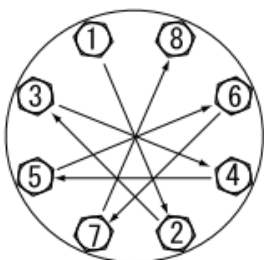
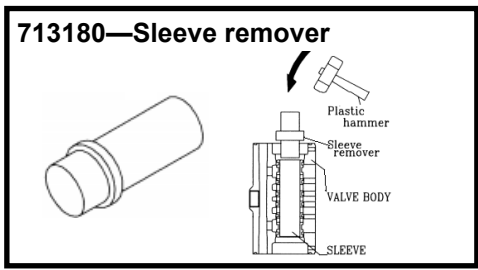
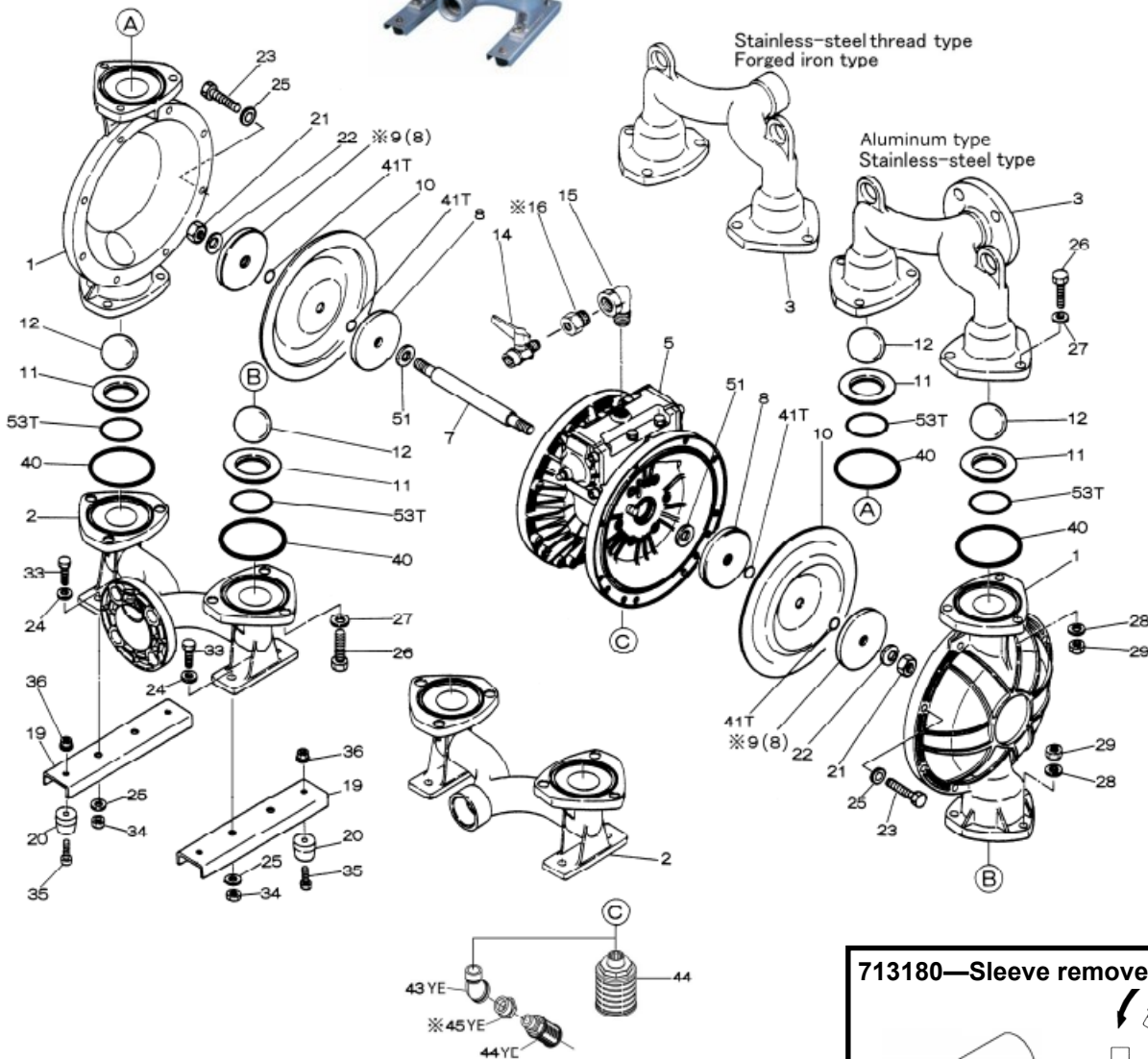
Material: Cast Iron (FC250)

**Yamada** Europe B.V.



**To Purchase:** 0031 (0)74 242 2032  
 sales@yamada.nl

**More information:** YouTube: @yamadapump  
 yamada-europe.com



**Tighting torque for:**

|                |            |
|----------------|------------|
| Center rod:    | 60 Nm      |
| Center rod TU: | Hand tight |
| Out chamber:   | 40 Nm      |
| Manifold:      | 25 Nm      |

**Special tools (sold seperately)**

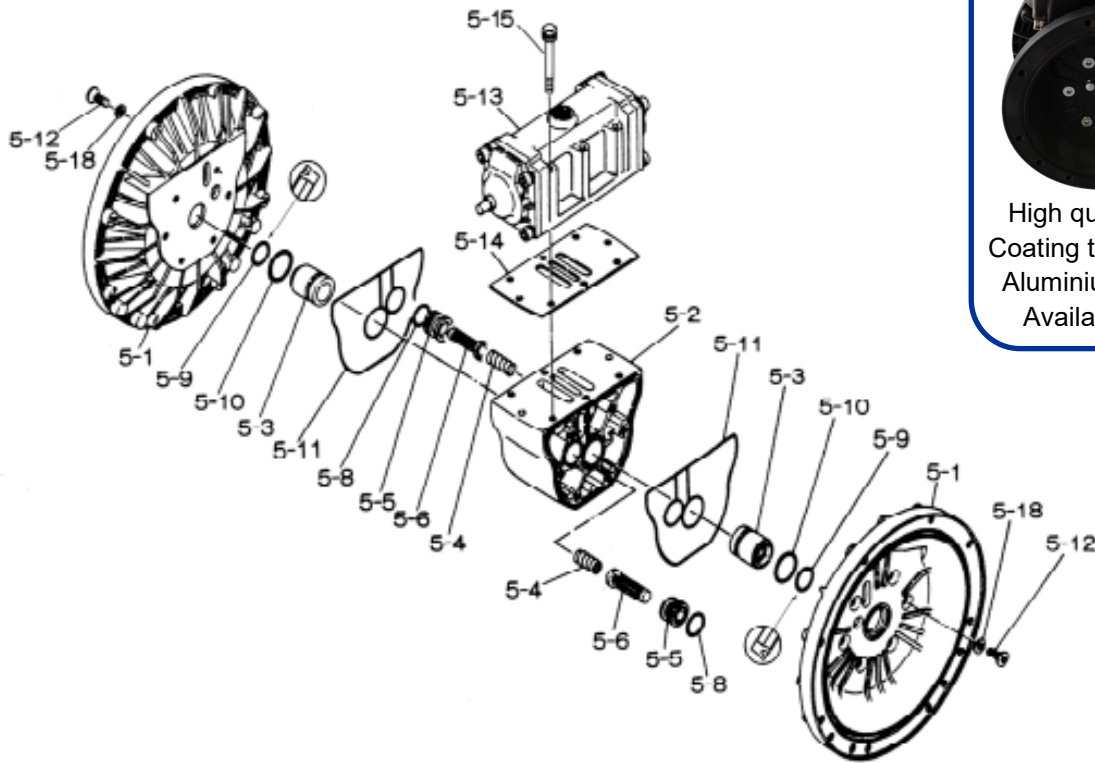
713180 Sleeve remover

**Miscellaneous:**

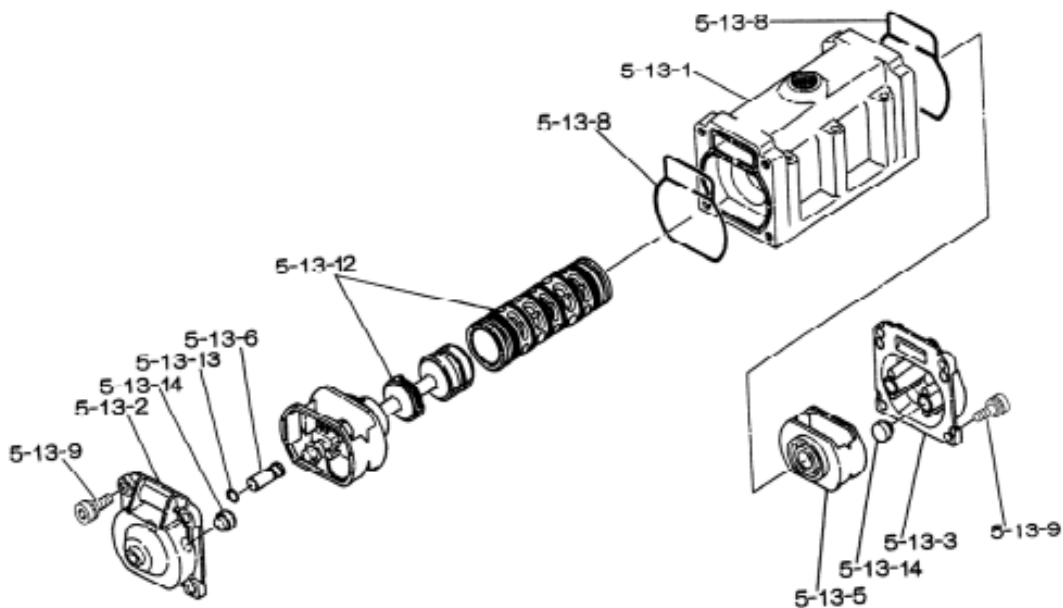
Assembly oil: use turbine oil none additional class 1  
 Equiv. to ISO VGA32 grade  
 Use Urea grease grade NLGI No. 2



### Body Assembly



### Valve Body Assembly



# EXPLODED VIEW & PARTS LISTING

Model : NDP-40BF.

**Yamada** Europe B.V.



## Air Operated Double Diaphragm

Material: Cast Iron (FC250)



Diaphragm

Design #

| REF.No.  | DESCRIPTION       | Q-TY.    | CR       | NBR      | EPDM     | TPEE     | TPO      | FPM      | PTFE     | PTFE-EPDM   |
|----------|-------------------|----------|----------|----------|----------|----------|----------|----------|----------|-------------|
|          |                   |          | BFC      | BFN      | BFE      | BFH      | BFS      | BFV      | BFT      | BFTU        |
|          |                   |          | 855060   | 855061   | 855062   | 855065   | 855066   | 855063   | 855064   | YE original |
| Part No. | Part No.          | Part No. | Part No. | Part No. | Part No. | Part No. | Part No. | Part No. | Part No. |             |
| 1        | OUT CHAMBER       | 2        | 713156   | 713156   | 713156   | 713156   | 713156   | 713156   | 713156   | 713156      |
| 2        | IN MANIFOLD       | 1        | 713162   | 713162   | 713162   | 713162   | 713162   | 713162   | 713162   | 713162      |
| 3        | OUT MANIFOLD      | 1        | 713159   | 713159   | 713159   | 713159   | 713159   | 713159   | 713159   | 713159      |
| 5        | BODY ASSY         | 1        | 803121   | 803121   | 803121   | 803121   | 803121   | 803121   | 803121   | 803121      |
| 5-1      | AIR CHAMBER       | 2        | 711933   | 711933   | 711933   | 711933   | 711933   | 711933   | 711933   | 711933      |
| 5-2      | BODY              | 1        | 711947   | 711947   | 711947   | 711947   | 711947   | 711947   | 711947   | 711947      |
| *5-3     | THROAT BEARING    | 2        | 772689   | 772689   | 772689   | 772689   | 772689   | 772689   | 772689   | 772689      |
| 5-4      | SPRING            | 2        | 711937   | 711937   | 711937   | 711937   | 711937   | 711937   | 711937   | 711937      |
| 5-5      | VALVE SEAT        | 2        | 771740   | 771740   | 771740   | 771740   | 771740   | 771740   | 771740   | 771740      |
| 5-6      | PILOT VALVE ASSY  | 2        | 832162   | 832162   | 832162   | 832162   | 832162   | 832162   | 832162   | 832162      |
| 5-8      | O RING            | 2        | 640020   | 640020   | 640020   | 640020   | 640020   | 640020   | 640020   | 640020      |
| 5-9      | PACKING           | 2        | 685444   | 685444   | 685444   | 685444   | 685444   | 685444   | 685444   | 685444      |
| 5-10     | O RING            | 2        | 640029   | 640029   | 640029   | 640029   | 640029   | 640029   | 640029   | 640029      |
| 5-11     | GASKET            | 2        | 771742   | 771742   | 771742   | 771742   | 771742   | 771742   | 771742   | 771742      |
| 5-12     | BOLT              | 12       | 683812   | 683812   | 683812   | 683812   | 683812   | 683812   | 683812   | 683812      |
| 5-13     | VALVE BODY ASSY   | 1        | 803120   | 803120   | 803120   | 803120   | 803120   | 803120   | 803120   | 803120      |
| 5-13-1   | VALVE BODY        | 1        | 711946   | 711946   | 711946   | 711946   | 711946   | 711946   | 711946   | 711946      |
| 5-13-2   | CAP A             | 1        | 580999   | 580999   | 580999   | 580999   | 580999   | 580999   | 580999   | 580999      |
| 5-13-3   | CAP B             | 1        | 581000   | 581000   | 581000   | 581000   | 581000   | 581000   | 581000   | 581000      |
| 5-13-5   | SPRING RETAINER   | 1        | 771735   | 771735   | 771735   | 771735   | 771735   | 771735   | 771735   | 771735      |
| 5-13-6   | RESET BUTTON      | 1        | 712976   | 712976   | 712976   | 712976   | 712976   | 712976   | 712976   | 712976      |
| 5-13-8   | GASKET            | 2        | 771738   | 771738   | 771738   | 771738   | 771738   | 771738   | 771738   | 771738      |
| 5-13-9   | BOLT              | 8        | 685036   | 685036   | 685036   | 685036   | 685036   | 685036   | 685036   | 685036      |
| 5-13-12  | C SPOOL ASSY      | 1        | 805084   | 805084   | 805084   | 805084   | 805084   | 805084   | 805084   | 805084      |
| 5-13-13  | O RING            | 1        | 640005   | 640005   | 640005   | 640005   | 640005   | 640005   | 640005   | 640005      |
| 5-13-14  | CUSHION           | 4        | 684128   | 684128   | 684128   | 684128   | 684128   | 684128   | 684128   | 684128      |
| 5-14     | GASKET            | 1        | 771712   | 771712   | 771712   | 771712   | 771712   | 771712   | 771712   | 771712      |
| 5-15     | BOLT & WASHER     | 6        | 684240   | 684240   | 684240   | 684240   | 684240   | 684240   | 684240   | 684240      |
| 5-18     | PLAIN WASHER      | 12       | 684987   | 684987   | 684987   | 684987   | 684987   | 684987   | 684987   | 684987      |
| 7        | CENTER ROD        | 1        | 711900   | 711900   | 711900   | 711900   | 711900   | 711900   | 711939   | 717130      |
| 8        | CENTER DISK       | 2        | 711902   | 711902   | 711902   | 711902   | 711902   | 711902   | 707817   | 717132      |
| 9        | CENTER DISK       | 2        | 713369   | 713369   | 713369   | 713369   | 713369   | 713369   | 713389   | —           |
| 10       | DIAPHRAGM         | 2        | 771853   | 771700   | 771854   | 771701   | 771975   | 771799   | 770814   | 833223      |
| 11       | VALVE SEAT        | 4        | 771956   | 771994   | 771921   | 771793   | 772003   | 771997   | 711908   | 711908      |
| 12       | BALL              | 4        | 770550   | 770584   | 770593   | 773142   | 773172   | 770602   | 770692   | 770692      |
| 14       | VALVE             | 1        | 686971   | 686971   | 686971   | 686971   | 686971   | 686971   | 686971   | 686971      |
| 15       | ELBOW             | 1        | 634034   | 634034   | 634034   | 634034   | 634034   | 634034   | 634034   | 634034      |
| 16       | BUSHING           | 1        | 634601   | 634601   | 634601   | 634601   | 634601   | 634601   | 634601   | 634601      |
| 19       | BASE              | 2        | 711911   | 711911   | 711911   | 711911   | 711911   | 711911   | 711911   | 711911      |
| 20       | RUBBER FOOT       | 4        | 771402   | 771402   | 771402   | 771402   | 771402   | 771402   | 771402   | 771402      |
| 21       | NUT               | 2        | 683408   | 683408   | 683408   | 683408   | 683408   | 706128   | 706128   | 706128      |
| 22       | CONED DISC SPRING | 2        | 682740   | 682740   | 682740   | 682740   | 682740   | 682740   | 682740   | 682740      |
| 23       | BOLT              | 16       | 686160   | 686160   | 686160   | 686160   | 686160   | 686160   | 686160   | 621180      |
| 24       | PLAIN WASHER      | 4        | 631014   | 631014   | 631014   | 631014   | 631014   | 631014   | 631014   | 631174      |
| 25       | WAVE WASHER       | 20       | 631917   | 631917   | 631917   | 631917   | 631917   | 631917   | 631917   | 631937      |
| 26       | BOLT              | 12       | 611202   | 611202   | 611202   | 611202   | 611202   | 611202   | 611202   | 611202      |
| 27       | PLAIN WASHER      | 12       | 631015   | 631015   | 631015   | 631015   | 631015   | 631015   | 631015   | 631175      |
| 28       | WAVE WASHER       | 12       | 631918   | 631918   | 631918   | 631918   | 631918   | 631918   | 631918   | 631938      |
| 29       | NUT               | 12       | 627014   | 627014   | 627014   | 627014   | 627014   | 627014   | 627014   | 628014      |
| 33       | BOLT              | 4        | 611175   | 611175   | 611175   | 611175   | 611175   | 611175   | 611175   | 621175      |
| 34       | NUT               | 4        | 627013   | 627013   | 627013   | 627013   | 627013   | 627013   | 627013   | 628013      |
| 35       | BOLT              | 4        | 611149   | 611149   | 611149   | 611149   | 611149   | 611149   | 611149   | 611149      |
| 36       | FLANGED NUT       | 4        | 682276   | 682276   | 682276   | 682276   | 682276   | 682276   | 682276   | 682276      |
| 40       | O RING            | 4        | 640065   | 640065   | 683999   | 640065   | 683999   | 642065   | 643065   | 643065      |
| 41T      | O RING            | 4        | —        | —        | —        | —        | —        | —        | 643015   | —           |
| 43YE     | ELBOW             | 1        | 634050   | 634050   | 634050   | 634050   | 634050   | 634050   | 634050   | 634050      |
| 44YE     | MUFFLER           | 1        | 680913   | 680913   | 680913   | 680913   | 680913   | 680913   | 680913   | 680913      |
| 45YE     | BUSHING           | 1        | 634605   | 634605   | 634605   | 634605   | 634605   | 634605   | 634605   | 634605      |
| 51       | CUSHION           | 2        | 770582   | 770582   | 770582   | 770582   | 770582   | 770582   | —        | 773435      |
| 53T      | O RING            | 4        | —        | —        | —        | —        | —        | —        | 643136   | 643136      |
| KIT      | DIAPHRAGM         |          | K40D-MC  | K40D-MN  | K40D-ME  | K40D-MH  | K40D-MS  | K40D-MV  | K40D-MT  | K40D-TU     |
| KIT      | VALVE             |          | K40V-MC  | K40V-MN  | K40V-ME  | K40V-MH  | K40V-MS  | K40V-MV  | K40V-ST  | K40V-ST     |
| KIT      | WET END REPAIR    |          | K40-MC   | K40-MN   | K40-ME   | K40-MH   | K40-MS   | K40-MV   | K40-MT   | K40-TU      |
| KIT      | AIR MOTOR         |          |          |          |          |          |          |          |          |             |
| KIT      | AIR MOTOR SEAL    |          |          |          |          |          |          |          |          |             |

\* Throat bearing position 5-3, 772689 is only available as an assembly. Positions 5-3, 5-9 and 5-10. Article code 020689

# EXPLODED VIEW & PARTS LISTING

Model : NDP-40BF.

**Yamada** Europe B.V.



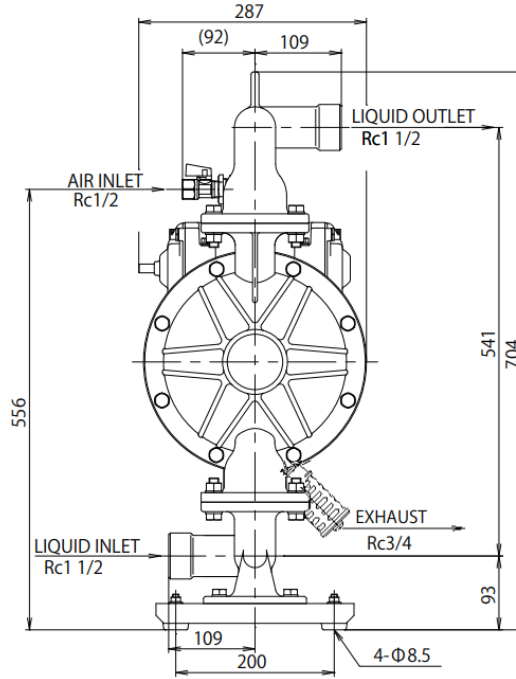
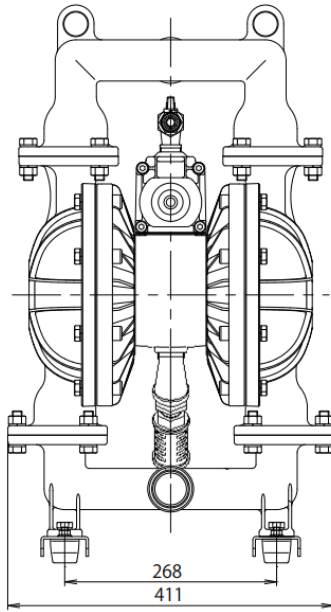
## Air Operated Double Diaphragm pump



Material: Cast Iron (FC250)

| Diaphragm options   | CR, EPDM, NBR, FPM, TPEE, TPO | PTFE      | TU        |
|---------------------|-------------------------------|-----------|-----------|
| Max performance     | 405 L/min                     | 350 L/min | 380 L/min |
| Manifold connection | Rc 1,5"                       |           |           |
| Net Weight          | 47,0 kg                       |           |           |

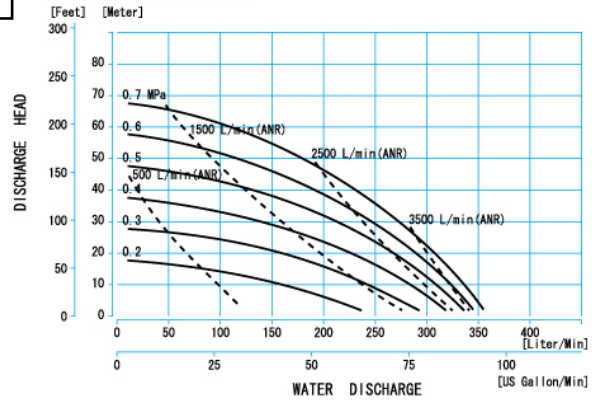
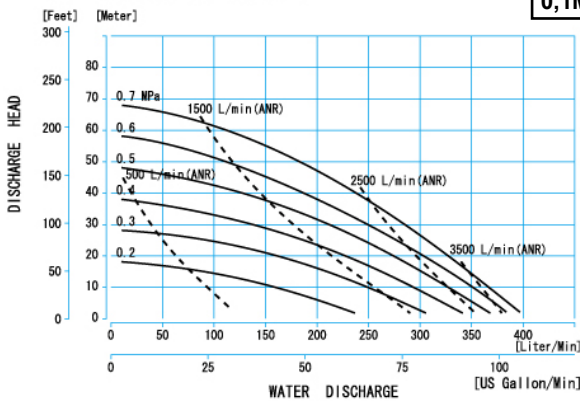
MODEL : NDP-40BF



NDP-40BA □, BS □, BF □

0,1MPa = 1Bar

NDP-40BAT, BST, BFT



NDP-40BATU, BFTU, BSTU

