

EXPLODED VIEW & PARTS LISTING

Air Operated Double Diaphragm pump

Model : NDP-40BF.

Material: Cast Iron (FC250)

Yamada Europe B.V.



To Purchase:

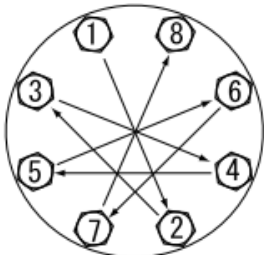
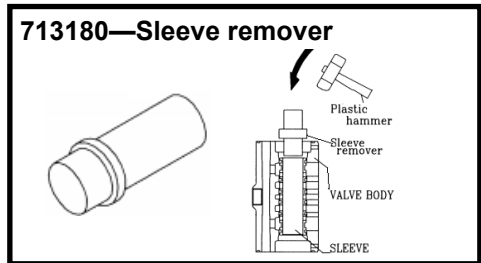
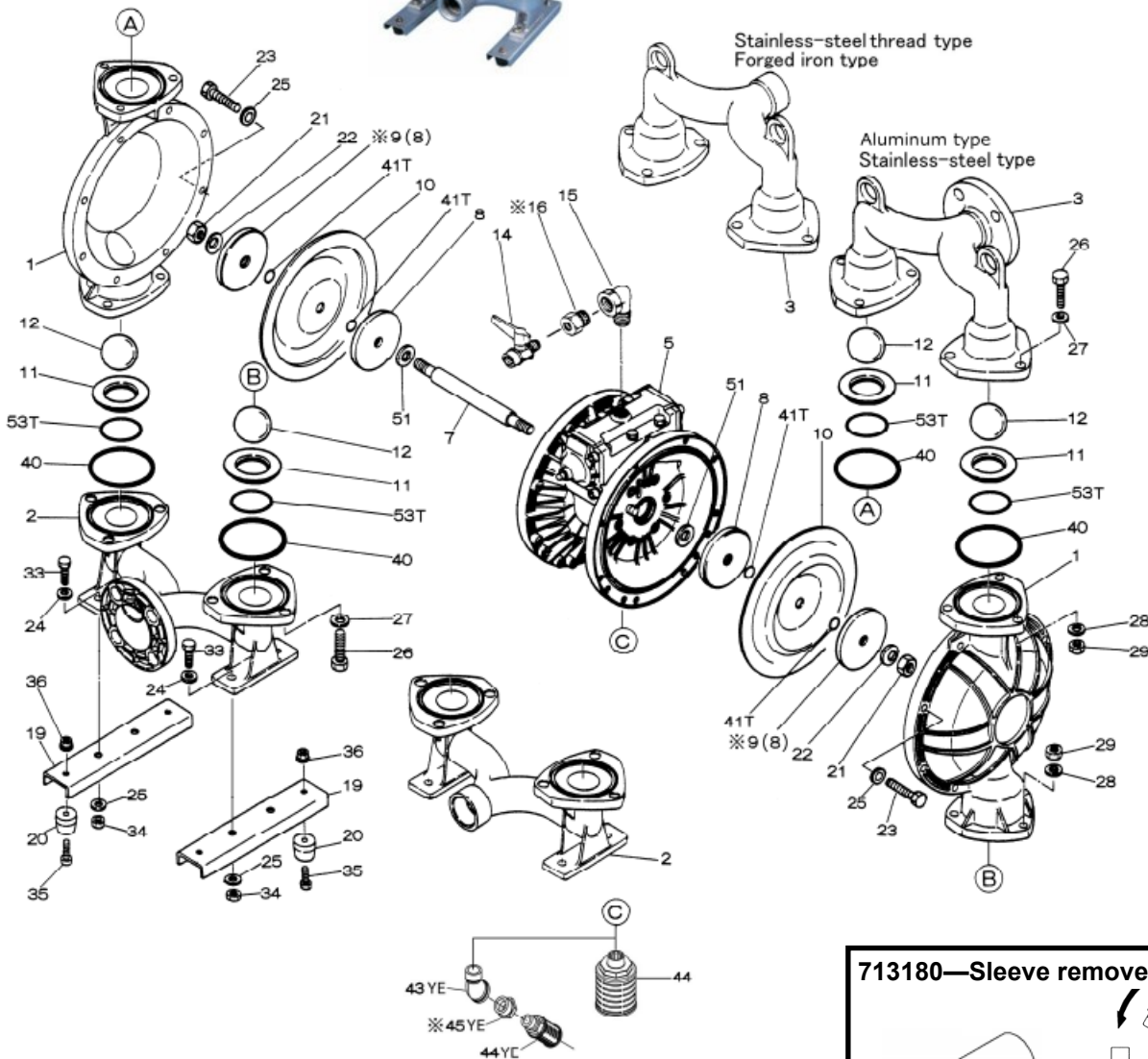
More information:

☎ 0031 (0)74 242 2032

▶ YouTube: [@yamadapump](https://www.youtube.com/@yamadapump)

✉ sales@yamada.nl

🌐 yamada-europe.com



Tighting torque for:

Center rod:	60 Nm
Center rod TU:	Hand tight
Out chamber:	40 Nm
Manifold:	25 Nm

Special tools (sold seperately)

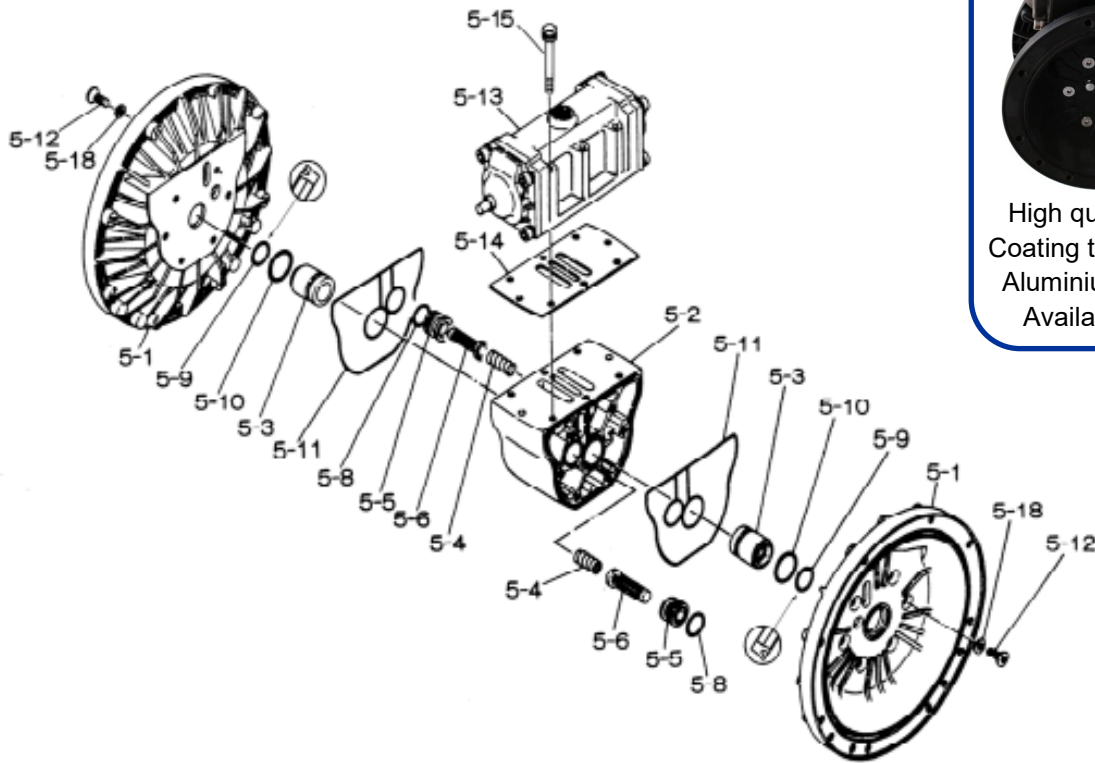
713180 Sleeve remover

Miscellaneous:

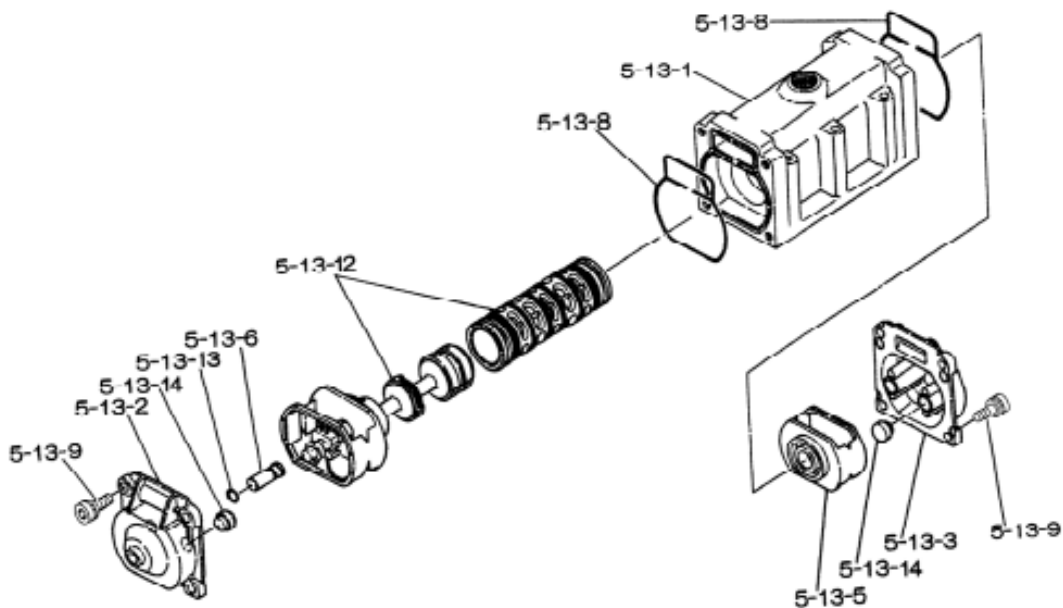
Assembly oil: use turbine oil none additional class 1
 Equiv. to ISO VGA32 grade
 Use Urea grease grade NLGI No. 2



Body Assembly



Valve Body Assembly



EXPLODED VIEW & PARTS LISTING

Model : NDP-40BF.

Yamada Europe B.V.



Air Operated Double Diaphragm

Material: Cast Iron (FC250)



Diaphragm

Design #

REF.No.	DESCRIPTION	Q-TY.	CR	NBR	EPDM	TPEE	TPO	FPM	PTFE	PTFE-EPDM
			BFC	BFN	BFE	BFH	BFS	BFV	BFT	BFTU
			855060	855061	855062	855065	855066	855063	855064	YE original
Part No.	Part No.	Part No.	Part No.	Part No.	Part No.	Part No.	Part No.	Part No.	Part No.	
1	OUT CHAMBER	2	713156	713156	713156	713156	713156	713156	713156	713156
2	IN MANIFOLD	1	713162	713162	713162	713162	713162	713162	713162	713162
3	OUT MANIFOLD	1	713159	713159	713159	713159	713159	713159	713159	713159
5	BODY ASSY	1	803121	803121	803121	803121	803121	803121	803121	803121
5-1	AIR CHAMBER	2	711933	711933	711933	711933	711933	711933	711933	711933
5-2	BODY	1	711947	711947	711947	711947	711947	711947	711947	711947
*5-3	THROAT BEARING	2	772689	772689	772689	772689	772689	772689	772689	772689
5-4	SPRING	2	711937	711937	711937	711937	711937	711937	711937	711937
5-5	VALVE SEAT	2	771740	771740	771740	771740	771740	771740	771740	771740
5-6	PILOT VALVE ASSY	2	832162	832162	832162	832162	832162	832162	832162	832162
5-8	O RING	2	640020	640020	640020	640020	640020	640020	640020	640020
5-9	PACKING	2	685444	685444	685444	685444	685444	685444	685444	685444
5-10	O RING	2	640029	640029	640029	640029	640029	640029	640029	640029
5-11	GASKET	2	771742	771742	771742	771742	771742	771742	771742	771742
5-12	BOLT	12	683812	683812	683812	683812	683812	683812	683812	683812
5-13	VALVE BODY ASSY	1	803120	803120	803120	803120	803120	803120	803120	803120
5-13-1	VALVE BODY	1	711946	711946	711946	711946	711946	711946	711946	711946
5-13-2	CAP A	1	580999	580999	580999	580999	580999	580999	580999	580999
5-13-3	CAP B	1	581000	581000	581000	581000	581000	581000	581000	581000
5-13-5	SPRING RETAINER	1	771735	771735	771735	771735	771735	771735	771735	771735
5-13-6	RESET BUTTON	1	712976	712976	712976	712976	712976	712976	712976	712976
5-13-8	GASKET	2	771738	771738	771738	771738	771738	771738	771738	771738
5-13-9	BOLT	8	685036	685036	685036	685036	685036	685036	685036	685036
5-13-12	C SPOOL ASSY	1	805084	805084	805084	805084	805084	805084	805084	805084
5-13-13	O RING	1	640005	640005	640005	640005	640005	640005	640005	640005
5-13-14	CUSHION	4	684128	684128	684128	684128	684128	684128	684128	684128
5-14	GASKET	1	771712	771712	771712	771712	771712	771712	771712	771712
5-15	BOLT & WASHER	6	684240	684240	684240	684240	684240	684240	684240	684240
5-18	PLAIN WASHER	12	684987	684987	684987	684987	684987	684987	684987	684987
7	CENTER ROD	1	711900	711900	711900	711900	711900	711900	711939	717130
8	CENTER DISK	2	711902	711902	711902	711902	711902	711902	707817	717132
9	CENTER DISK	2	713369	713369	713369	713369	713369	713369	713389	—
10	DIAPHRAGM	2	771853	771700	771854	771701	771975	771799	770814	833223
11	VALVE SEAT	4	771956	771994	771921	771793	772003	771997	711908	711908
12	BALL	4	770550	770584	770593	773142	773172	770602	770692	770692
14	VALVE	1	686971	686971	686971	686971	686971	686971	686971	686971
15	ELBOW	1	634034	634034	634034	634034	634034	634034	634034	634034
16	BUSHING	1	634601	634601	634601	634601	634601	634601	634601	634601
19	BASE	2	711911	711911	711911	711911	711911	711911	711911	711911
20	RUBBER FOOT	4	771402	771402	771402	771402	771402	771402	771402	771402
21	NUT	2	683408	683408	683408	683408	683408	706128	706128	706128
22	CONED DISC SPRING	2	682740	682740	682740	682740	682740	682740	682740	682740
23	BOLT	16	686160	686160	686160	686160	686160	686160	686160	621180
24	PLAIN WASHER	4	631014	631014	631014	631014	631014	631014	631014	631174
25	WAVE WASHER	20	631917	631917	631917	631917	631917	631917	631917	631937
26	BOLT	12	611202	611202	611202	611202	611202	611202	611202	611202
27	PLAIN WASHER	12	631015	631015	631015	631015	631015	631015	631015	631175
28	WAVE WASHER	12	631918	631918	631918	631918	631918	631918	631918	631938
29	NUT	12	627014	627014	627014	627014	627014	627014	627014	628014
33	BOLT	4	611175	611175	611175	611175	611175	611175	611175	621175
34	NUT	4	627013	627013	627013	627013	627013	627013	627013	628013
35	BOLT	4	611149	611149	611149	611149	611149	611149	611149	611149
36	FLANGED NUT	4	682276	682276	682276	682276	682276	682276	682276	682276
40	O RING	4	640065	640065	683999	640065	683999	642065	643065	643065
41T	O RING	4	—	—	—	—	—	—	643015	—
43YE	ELBOW	1	634050	634050	634050	634050	634050	634050	634050	634050
44YE	MUFFLER	1	680913	680913	680913	680913	680913	680913	680913	680913
45YE	BUSHING	1	634605	634605	634605	634605	634605	634605	634605	634605
51	CUSHION	2	770582	770582	770582	770582	770582	770582	—	773435
53T	O RING	4	—	—	—	—	—	—	643136	643136
KIT	DIAPHRAGM		K40D-MC	K40D-MN	K40D-ME	K40D-MH	K40D-MS	K40D-MV	K40D-MT	K40D-TU
KIT	VALVE		K40V-MC	K40V-MN	K40V-ME	K40V-MH	K40V-MS	K40V-MV	K40V-ST	K40V-ST
KIT	WET END REPAIR		K40-MC	K40-MN	K40-ME	K40-MH	K40-MS	K40-MV	K40-MT	K40-TU
KIT	AIR MOTOR									
KIT	AIR MOTOR SEAL									

* Throat bearing position 5-3, 772689 is only available as an assembly. Positions 5-3, 5-9 and 5-10. Article code 020689

EXPLODED VIEW & PARTS LISTING

Model : NDP-40BF.

Yamada Europe B.V.



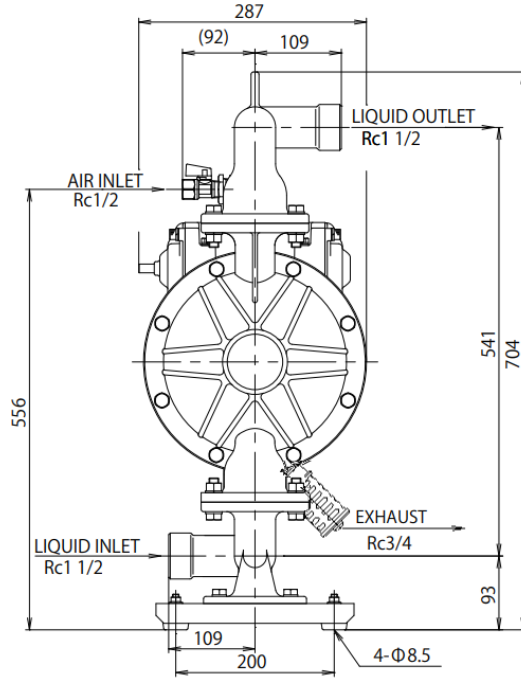
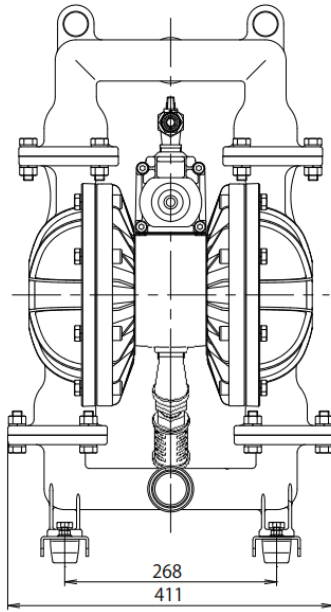
Air Operated Double Diaphragm pump



Material: Cast Iron (FC250)

Diaphragm options	CR, EPDM, NBR, FPM, TPEE, TPO, PTFE, TU
Max performance	400 L/min (PTFE 350 L/min)
Manifold connection	Rc 1,5"
Net Weight	47,2 kg (PTFE/TU 46 kg)

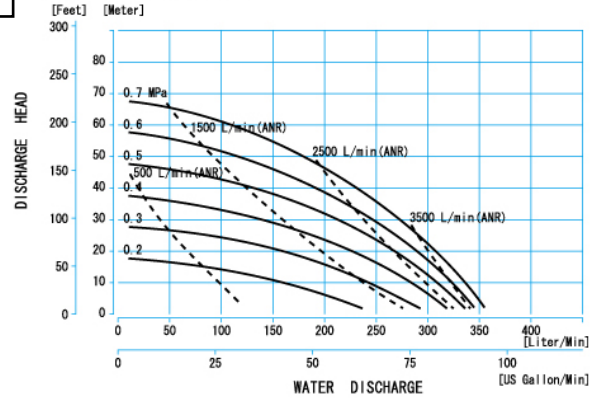
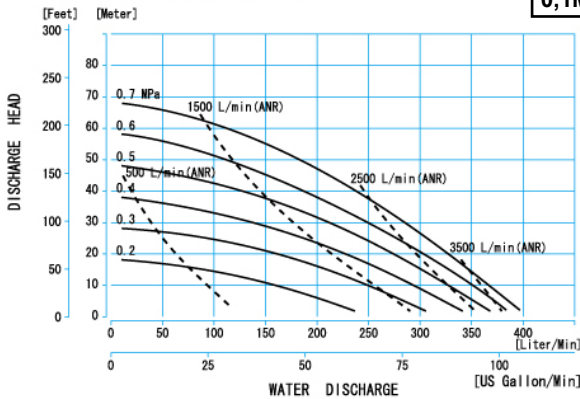
MODEL : NDP-40BF



NDP-40BA □, BS □, BF □

0,1MPa = 1Bar

NDP-40BAT, BST, BFT



NDP-40BATU, BFTU, BSTU

