

EXPLODED VIEW & PARTS LISTING

Air Operated Double Diaphragm pump

Model : NDP-50BF.

Yamada Europe B.V.



Material: Cast Iron (FC250)



To Purchase:

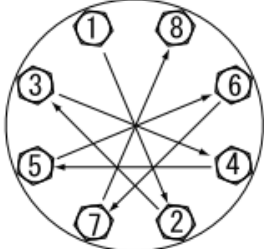
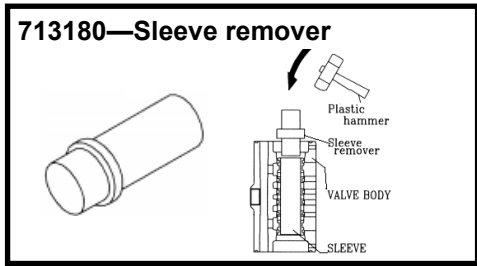
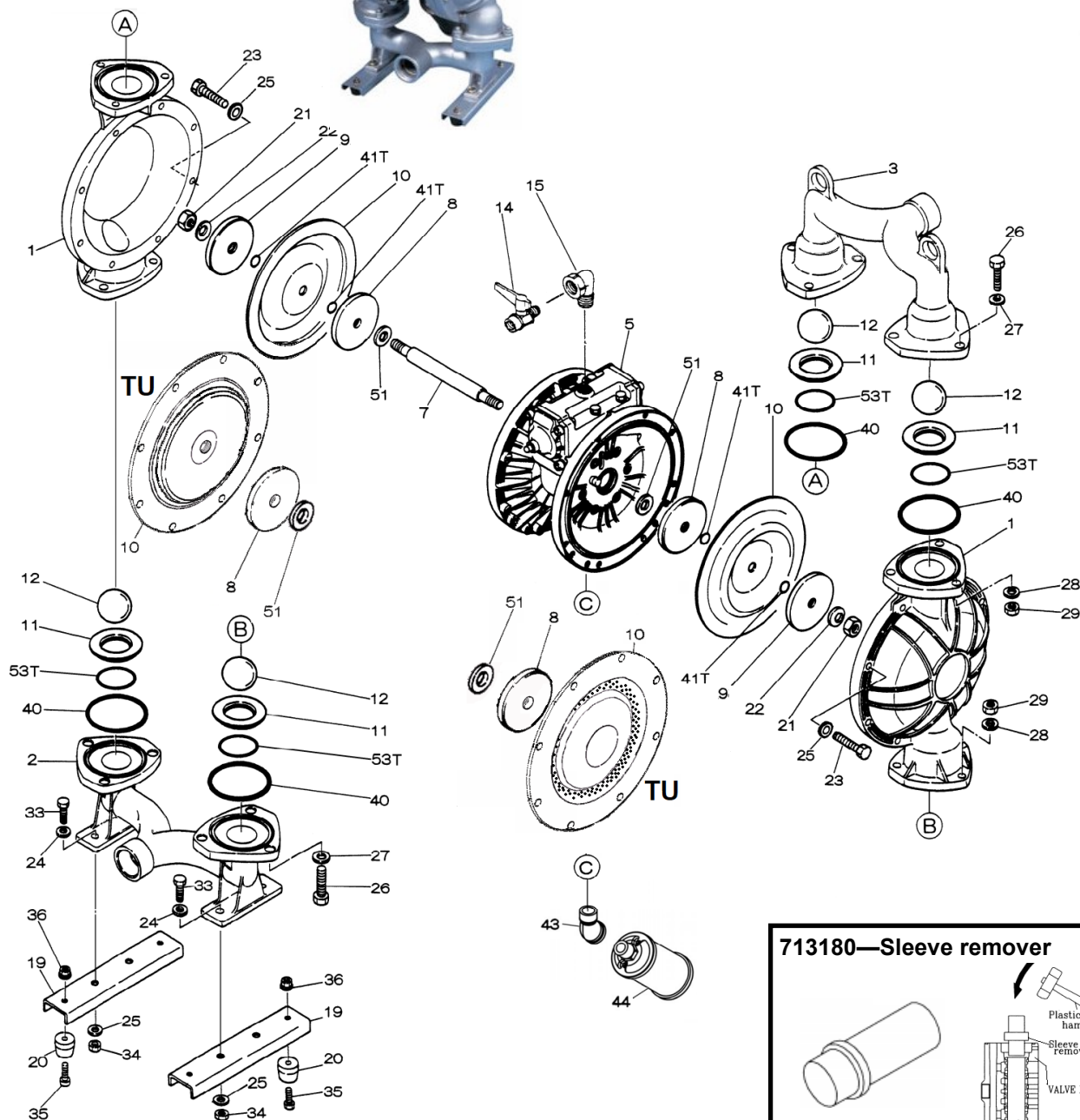
More information:

☎ 0031 (0)74 242 2032

▶ YouTube: [@yamadapump](https://www.youtube.com/@yamadapump)

✉ sales@yamada.nl

🌐 yamada-europe.com



Tighting torque for:

Center rod:	60 Nm
Center rod TU:	Hand tight
Out chamber:	40 Nm
Manifold:	25 Nm

Special tools (sold seperately)

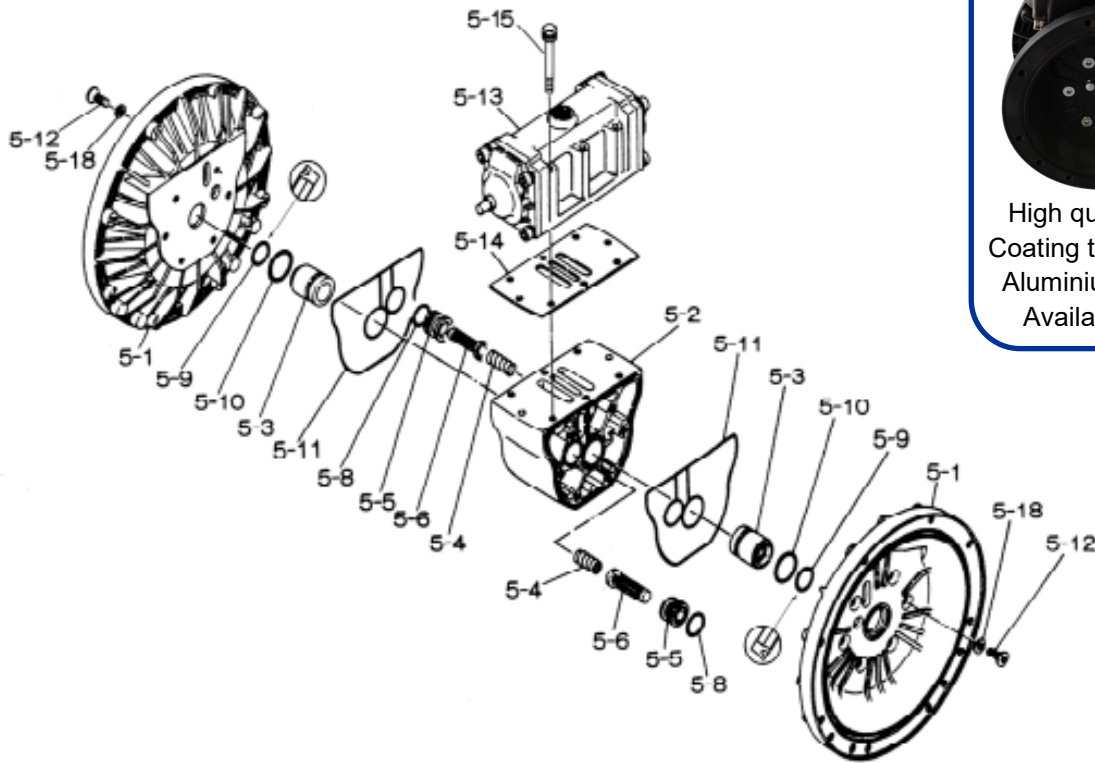
713180 Sleeve remover

Miscellaneous:

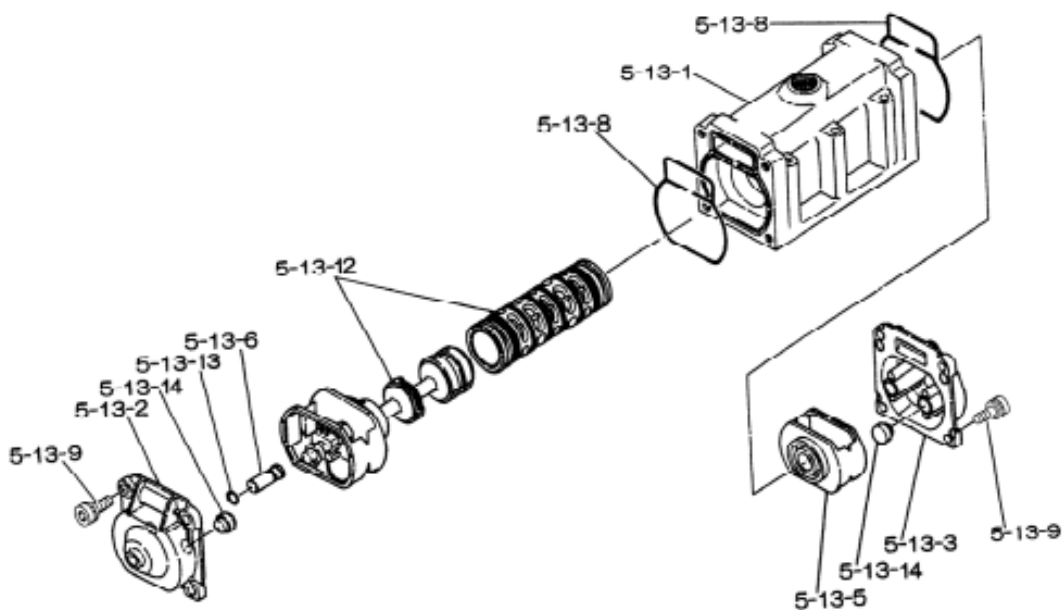
Assembly oil: use turbine oil none additional class 1
Equiv. to ISO VGA32 grade
Use Urea grease grade NLGI No. 2



Body Assembly



Valve Body Assembly





DIAPHRAGM

Design #

	CR	NBR	EPDM	HYTREL	SANTOPRENE	FPM	PTFE	PTFE-EPDM
	BFC	BFN	BFE	BFH	BFS	BFV	BFT	BFTU
	855077	855078	855079	855082	855083	855079	855081	YE Original

REF. No.	DESCRIPTION	Q'TY.	Part No.	Part No.	Part No.	Part No.	Part No.	Part No.	Part No.	Part No.	
1	OUT CHAMBER	2	713157	713157	713157	713157	713157	713157	713157	713157	
2	IN MANIFOLD	1	713163	713163	713163	713163	713163	713163	713163	713163	
3	OUT MANIFOLD	1	713160	713160	713160	713160	713160	713160	713160	713160	
5	BODY ASSY	1	803122	803122	803122	803122	803122	803122	803122	803122	
5-1	AIR CHAMBER	2	711934	711934	711934	711934	711934	711934	711934	711934	
5-2	BODY	1	711947	711947	711947	711947	711947	711947	711947	711947	
*5-3	THROAT BEARING	2	772689	772689	772689	772689	772689	772689	772689	772689	
5-4	SPRING	2	711937	711937	711937	711937	711937	711937	711937	711937	
5-5	VALVE SEAT	2	771740	771740	771740	771740	771740	771740	771740	771740	
5-6	PILOT VALVE ASSY	2	832162	832162	832162	832162	832162	832162	832162	832162	
5-8	O RING	2	640020	640020	640020	640020	640020	640020	640020	640020	
5-9	PACKING	2	685444	685444	685444	685444	685444	685444	685444	685444	
5-10	O RING	2	640029	640029	640029	640029	640029	640029	640029	640029	
5-11	GASKET	2	771742	771742	771742	771742	771742	771742	771742	771742	
5-12	BOLT	12	683812	683812	683812	683812	683812	683812	683812	683812	
5-13	VALVE BODY ASSY	1	803120	803120	803120	803120	803120	803120	803120	803120	
5-13-1	VALVE BODY	1	711946	711946	711946	711946	711946	711946	711946	711946	
5-13-2	CAP A	1	580999	580999	580999	580999	580999	580999	580999	580999	
5-13-3	CAP B	1	581000	581000	581000	581000	581000	581000	581000	581000	
5-13-5	SPRING RETAINER	1	771735	771735	771735	771735	771735	771735	771735	771735	
5-13-6	RESET BUTTON	1	712976	712976	712976	712976	712976	712976	712976	712976	
5-13-8	GASKET	2	771738	771738	771738	771738	771738	771738	771738	771738	
O-rings sleeve	5-13-9	BOLT	8	685036	685036	685036	685036	685036	685036	685036	
	5-13-12	C SPOOL ASSY (C-spool + sleeve)	1	805084	805084	805084	805084	805084	805084	805084	
	5-13-13	O RING	1	640005	640005	640005	640005	640005	640005	640005	
	5-13-14	CUSHION	4	684128	684128	684128	684128	684128	684128	684128	
	5-14	GASKET	1	771712	771712	771712	771712	771712	771712	771712	
	5-15	BOLT & WASHER	6	684240	684240	684240	684240	684240	684240	684240	
	5-18	PLAIN WASHER	12	684987	684987	684987	684987	684987	684987	684987	
	7	CENTER ROD	1	711900	711900	711900	711900	711900	711900	711900	
	8	CENTER DISK DRY ALU	2	711904	711904	711904	711904	711904	707822	717133	
	9	CENTER DISK WET STEEL	2	713370	713370	713370	713370	713370	713390	-	
	10	DIAPHRAGM	2	771855	771702	771856	771703	771976	771800	770815	833220
	11	VALVE SEAT RUBBER	4	771957	771995	771949	771794	772004	771987	-	-
	11	VALVE SEAT SUS	4	-	-	-	-	-	-	711909	711909
	12	BALL	4	770627	770630	770633	773143	773173	770636	770693	770693
	14	VALVE	1	686973	686973	686973	686973	686973	686973	686973	686973
	15	ELBOW	1	634034	634034	634034	634034	634034	634034	634034	634034
	19	BASE	2	711928	711928	711928	711928	711928	711928	711928	711928
	20	RUBBER FOOT	4	771402	771402	771402	771402	771402	771402	771402	771402
	21	NUT	2	683408	683408	683408	706128	683408	683408	706128	-
	22	CONED DISC SPRING	2	682740	682740	682740	682740	682740	682740	682740	-
	23	BOLT	16	686162	686162	686162	686162	686162	686162	686162	686162
	24	PLAIN WASHER	4	631014	631014	631014	631014	631014	631014	631014	631014
	25	WAVE WASHER	20	631917	631917	631917	631917	631917	631917	631917	631917
	26	BOLT	12	611203	611203	611203	611203	611203	611203	611203	611203
	27	PLAIN WASHER	12	631015	631015	631015	631015	631015	631015	631015	631015
	28	WAVE WASHER	12	631918	631918	631918	631918	631918	631918	631918	631918
	29	NUT	12	627014	627014	627014	627014	627014	627014	627014	627014
	33	BOLT	4	611175	611175	611175	611175	611175	611175	611175	611175
	34	NUT	4	627013	627013	627013	627013	627013	627013	627013	627013
	35	BOLT	4	611149	611149	611149	611149	611149	611149	611149	611149
	36	FLANGED NUT	4	682276	682276	682276	682276	682276	682276	682276	682276
	40	O RING	4	640069	640069	684122	640069	684122	642069	643069	643069
	41T	O RING	4	-	-	-	-	-	-	643015	-
	43	ELBOW	1	634050	634050	634050	634050	634050	634050	634050	634050
	44	MUFFLER	1	687235	687235	687235	687235	687235	687235	687235	687235
	51	CUSHION	2	770582	770582	770582	770582	770582	770582	-	773435
	53T	O RING	4	-	-	-	-	-	-	643139	643139
	KIT	DIAPHRAGM		K50D-MC	K50D-MN	K50D-ME	K50D-MH	K50D-MS	K50D-MV	K50D-MT	K50D-TU
	KIT	VALVE		K50V-MC	K50V-MN	K50V-ME	K50V-MH	K50V-MS	K50V-MV	K50V-ST	K50V-ST
	KIT	WET END REPAIR		K50-MC	K50-MN	K50-ME	K50-MH	K50-MS	K50-MV	K50-MT	K50-TU
	KIT	AIR MOTOR		K40/50-AM							
	KIT	AIR MOTOR SEAL		K40/50/80-AMS							

! * Throat bearing position 5-3, 772689 is only available as an assembly. Positions 5-3, 5-9 and 5-10. Article code 020689

EXPLODED VIEW & PARTS LISTING

Air Operated Double Diaphragm pump



Model : NDP-50BF.

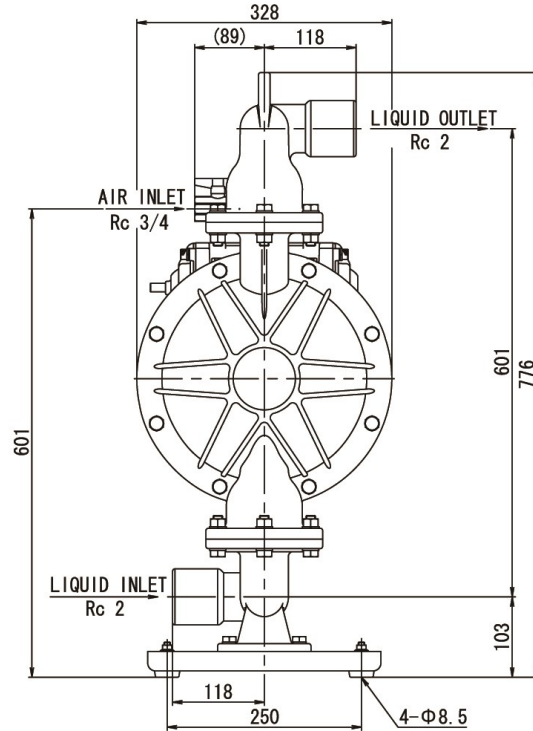
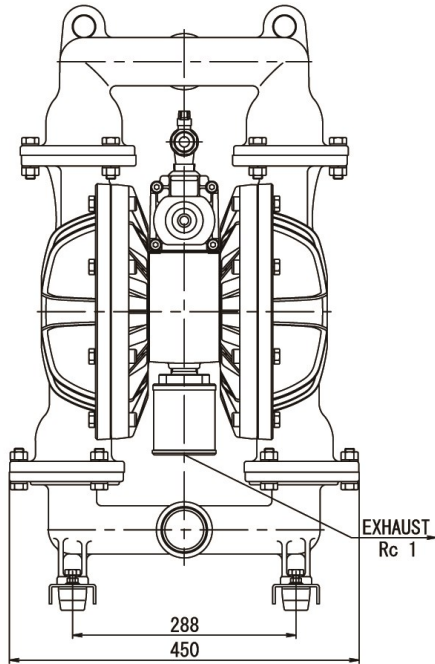
Yamada Europe B.V.



Material: Cast Iron (FC250)

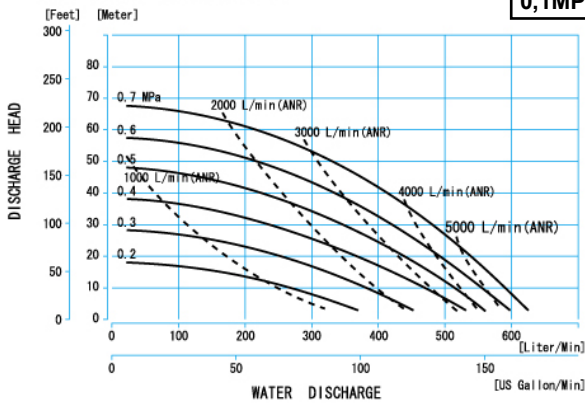
Diaphragm options	CR, EPDM, NBR, FPM, TPEE, TPO, PTFE, TU
Max performance	630 L/min (600 L/min)
Manifold connection	Rc 2"
Net Weight	65,0 kg (PTFE 61,5 kg / 62,5 kg)

MODEL : NDP-50BF.

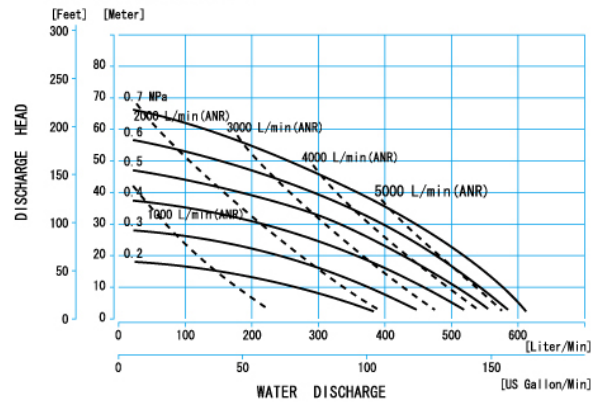


NDP-50BA □, BS □, BF □

0,1MPa = 1Bar



NDP-50BAT, BST, BFT



NDP-50BATU-RC, BFTU, BSTU

