

# EXPLODED VIEW & PARTS LISTING

## Air Operated Double Diaphragm pump

Model : NDP-P25BV.

**Yamada** Europe B.V.



Material: PVDF (Conductive Polivinyldene Fluoride)



To Purchase:

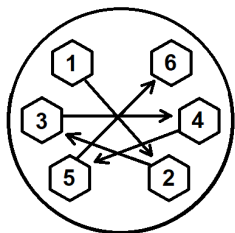
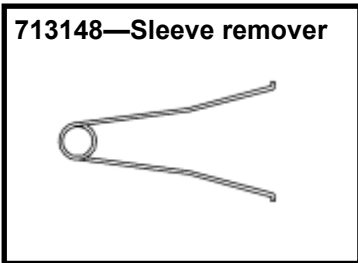
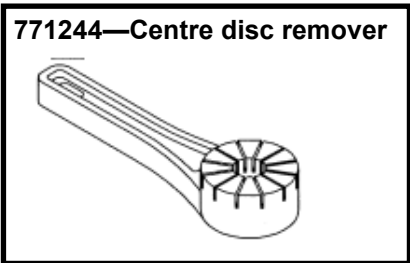
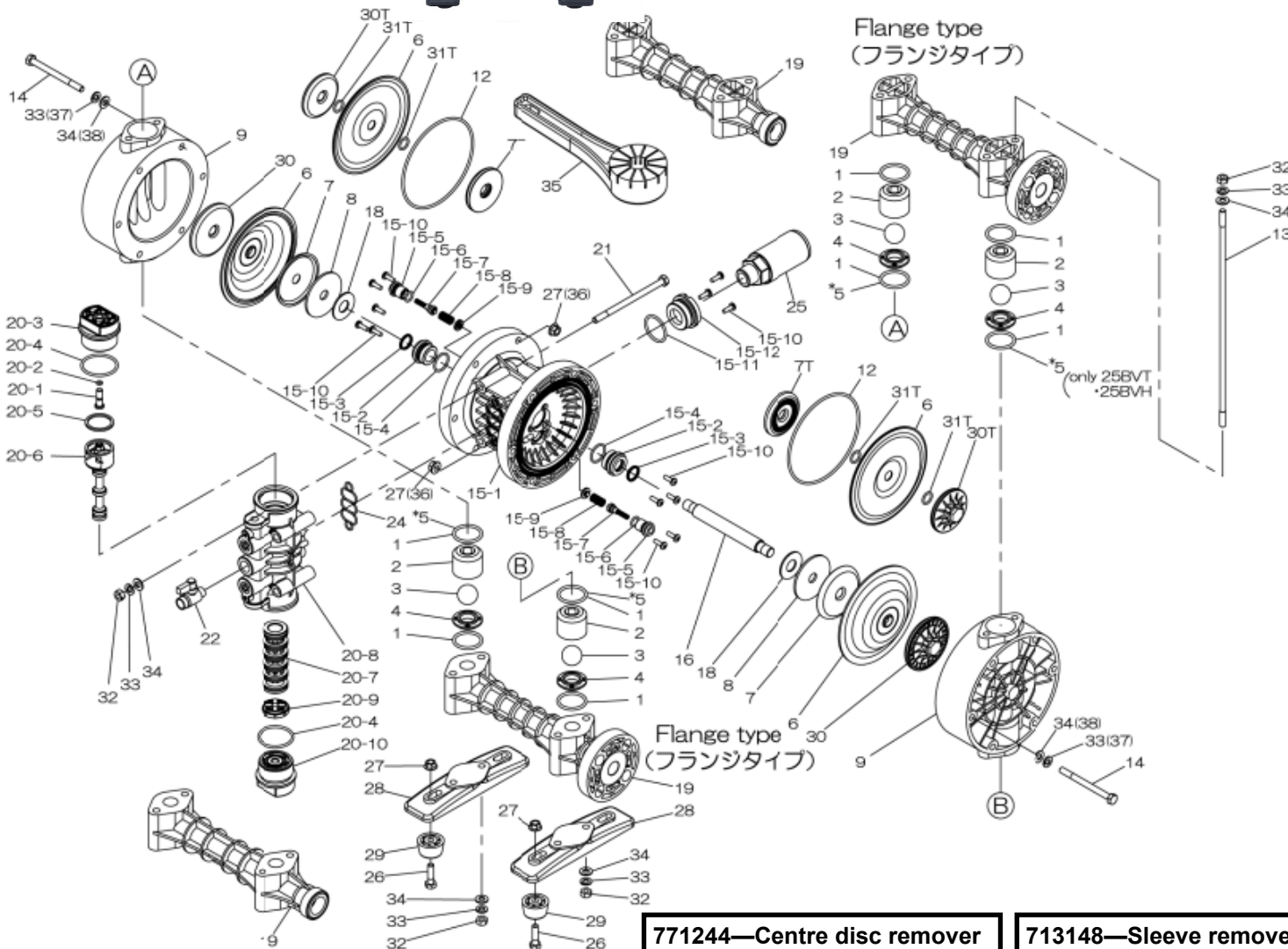
More information:

☎ 0031 (0)74 242 2032

▶ YouTube: [@yamadapump](https://www.youtube.com/@yamadapump)

✉ [sales@yamada.nl](mailto:sales@yamada.nl)

🌐 [yamada-europe.com](http://yamada-europe.com)



**Tighting torque for:**

Center rod: 40 Nm  
 Center rod TU: **Hand tight**  
 Out chamber: 10/20 Nm  
 Manifold: 10/12 Nm

**Special tools (sold seperately)**

713148 Sleeve remover  
 771244 Centre disc remover

**Miscellaneous:**

Assembly oil: use turbine oil none additional class 1  
 Equiv. to ISO VGA32 grade  
 Use Urea grease grade NLGI No. 2

# EXPLODED VIEW & PARTS LISTING

## Air Operated Double Diaphragm pump

Model : NDP-P25BV.

**Yamada** Europe B.V.



Material: PVDF (Conductive Polivinylidene Fluoride)

### DIAPHRAGM

### Design #

EPDM	HYTREL	SANTOPRENE	FPM	PTFE	PTFE-EPDM
BVE	BVH	BVS	BVV	BVT	BVTU
854950	854953	854965	854951	854952	YE Original



REF. No.	DESCRIPTION	Q'TY.	Part No.	Part No.	Part No.	Part No.	Part No.	Part No.
1	O RING	8	684119	—	—	642042	—	—
		4	—	643042	643042	—	643042	643042
2	BALL GUIDE	4	773419	773419	773419	773419	773419	773419
3	BALL	4	770590	773127	773171	770599	770691	770691
4	VALVE SEAT	4	780317	780317	780317	780317	780317	780317
5	O RING	4	—	643041	643041	—	643041	—
6	DIAPHRAGM	2	772963	771363	771974	772964	771110	832584
7	CENTER DISK	2	716258	716258	716258	716258	—	—
7T	CENTER DISK	2	—	—	—	—	709459	—
8	WASHER	2	716259	716259	716259	716259	—	—
9	OUT CHAMBER	2	780312	780312	780312	780312	780312	780312
12	O RING	2	—	640154	640154	—	640154	640154
13	TIE ROD	4	710207	710207	710207	710207	710207	710207
14	BOLT	12	683541	683541	683541	683541	683541	683541
15	BODY ASSY	1	804604	804604	804604	804604	804604	804604
16	CENTER ROD	1	710271	710271	710271	710271	710271	714812
18	CUSHION	2	771054	771054	771054	771054	771054	771054
19	MANIFOLD	2	780313	780313	780313	780313	780313	780313
20	VALVE BODY ASSY	1	804607	804607	804607	804607	804607	804607
21	BOLT	4	686031	686031	686031	686031	686031	686031
22	VALVE	1	686969	686969	686969	686969	686969	686969
24	GASKET	1	772848	772848	772848	772848	772848	772848
25	MUFFLER	1	804697	804697	804697	804697	804697	804697
26	BOLT	4	621153	621153	621153	621153	621153	621153
27	FLANGED NUT	4	686032	686032	686032	686032	686032	686032
28	BASE	2	771749	771749	771749	771749	771749	771749
29	RUBBER FOOT	4	770551	770551	770551	770551	770551	770551
30	CENTER DISK	2	780318	780318	780318	780318	—	772620
30T	CENTER DISK	2	—	—	—	—	780319	—
31T	O RING	4	—	—	—	—	643013	—
32	NUT	12	683635	683635	683635	683635	683635	683635
33	SPRING WASHER	12	681300	681300	681300	681300	681300	681300
34	PLAIN WASHER	12	631329	631329	631329	631329	631329	631329
35	SPECIAL TOOL	2	771244	771244	771244	771244	771244	771244
36	FLANGED NUT	12	686033	686033	686033	686033	686033	686033
37	SPRING WASHER	12	680257	680257	680257	680257	680257	680257
38	PLAIN WASHER	12	631330	631330	631330	631330	631330	631330
KIT	DIAPHRAGM		KP25D-PE	K25D-PH-1	K25D-PS-1	K25D-PV	K25D-PT	K25D-PTU
KIT	VALVE		KN25V-VE	KN25V-VH	KN25V-VS	KN25V-VV	KN25V-VT	KN25V-VT
KIT	WET END REPAIR		K25-VE-1	K25-VH	K25-VS	K25-VV-1	K25-VT	K25-VTU
KIT	AIR MOTOR		KP20/25-AM					
KIT	AIR MOTOR SEAL		KP20/25-AMS					

# EXPLODED VIEW & PARTS LISTING

## Air Operated Double Diaphragm pump



DIAPHRAGM

Design #

Model : NDP-P25BV.

**Yamada** Europe B.V.



Material: PVDF (Conductive Polyvinylidene Fluoride)

EPDM	HYTREL	SANTOPRENE	FPM	PTFE	PTFE-EPDM
BVE	BVH	BVS	BVV	BVT	BVTU
855046	855049	854941	855047	855048	YE Original

REF. No.	DESCRIPTION	Q'TY.	Part No.	Part No.	Part No.	Part No.	Part No.	Part No.
15- 1	BODY	1	772929					
*15- 2	THROAT BEARING	2	772931					
15- 3	PACKING	2	685414					
15- 4	O RING	2	685276					
15- 5	VALVE SEAT	2	772932					
15- 6	O RING	2	640009					
15- 7	PILOT VALVE ASSY	2	802360					
15-7-1	O RING SEAL PILOT VALVE	2	771374					
15- 8	SPRING	2	708666					
15- 9	SPRING SEAT	2	772948					
15-10	TAPPING SCREW	13	686030					
15-11	O RING	1	640132					
15-12	BUSHING	1	772933					
20- 1	RESET BUTTON	1	772991					
20- 2	O RING	1	640002					
20- 3	CAP A	1	772946					
20- 4	O RING	2	640043					
20- 5	PACKING	1	771241					
20- 6	C SPOOL ASSY	1	802400					
20- 7	SLEEVE ASSY	1	804609					
20-7-1	O RING	6	686029					
20- 8	VALVE BODY ASSY	1	832902					
20- 9	CUSHION	1	771914					
20-10	CAP B	1	772947					
KIT	AIR MOTOR		KP20/25-AM					
KIT	AIR MOTOR SEAL		KP20/25-AMS					

! \* Throat bearing position 15-2, 772931 is only available as an assembly. Positions 15-2, 15-3 and 15-4. Article code 020931

# EXPLODED VIEW & PARTS LISTING

## Air Operated Double Diaphragm pump



**MODEL :** NDP-P25BV.

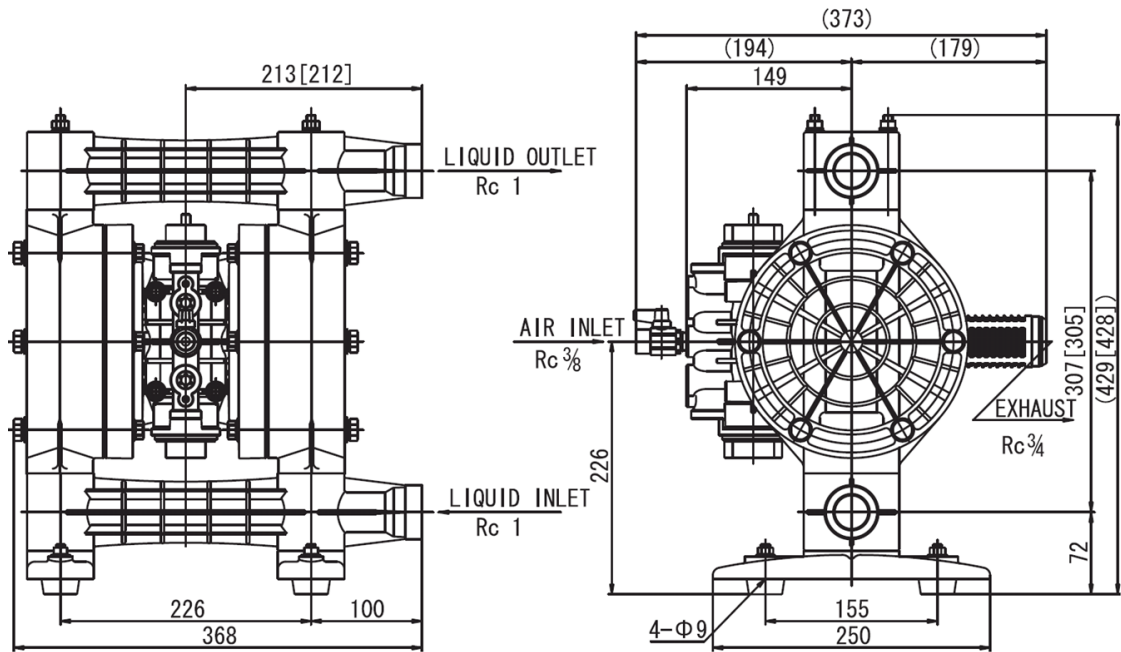
Model : NDP-P25BV.

**Yamada** Europe B.V.



Material: PVDF (Conductive Polivinyldiene Fluoride)

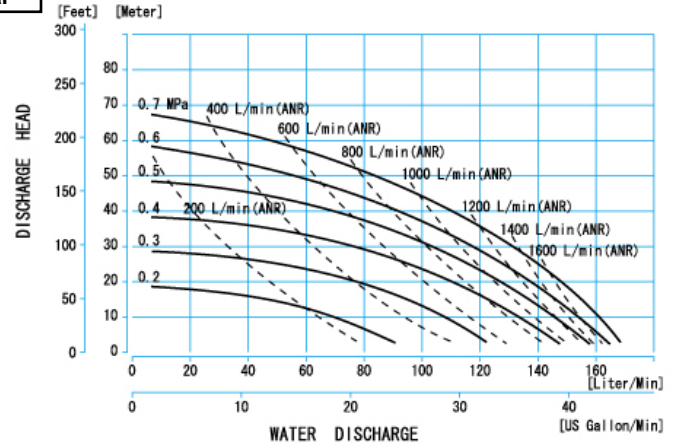
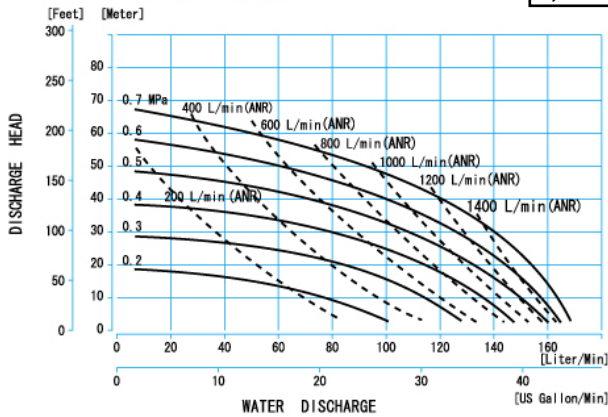
Diaphragm options	EPDM, FPM, TPEE, TPO, PTFE, TU
Max performance	160 L/min
Manifold connection	Rc 1"
Net Weight	13,5 kg



NDP-25BP □, BV □ flange

**0,1MPa = 1Bar**

NDP-25BPT, BVT flange



NDP-24BVTU

