

# EXPLODED VIEW & PARTS LISTING

## Air Operated Double Diaphragm pump

Model : NDP-P50BP.

**Yamada** Europe B.V.

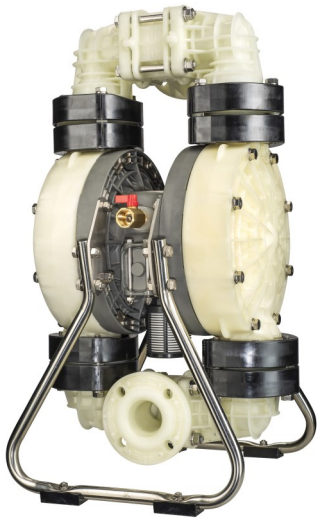


Material: PPG (Reinforced Polypropylene)

**Special tools sold separately:**  
771868—Disk remover

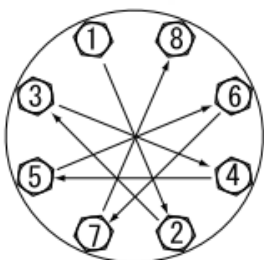
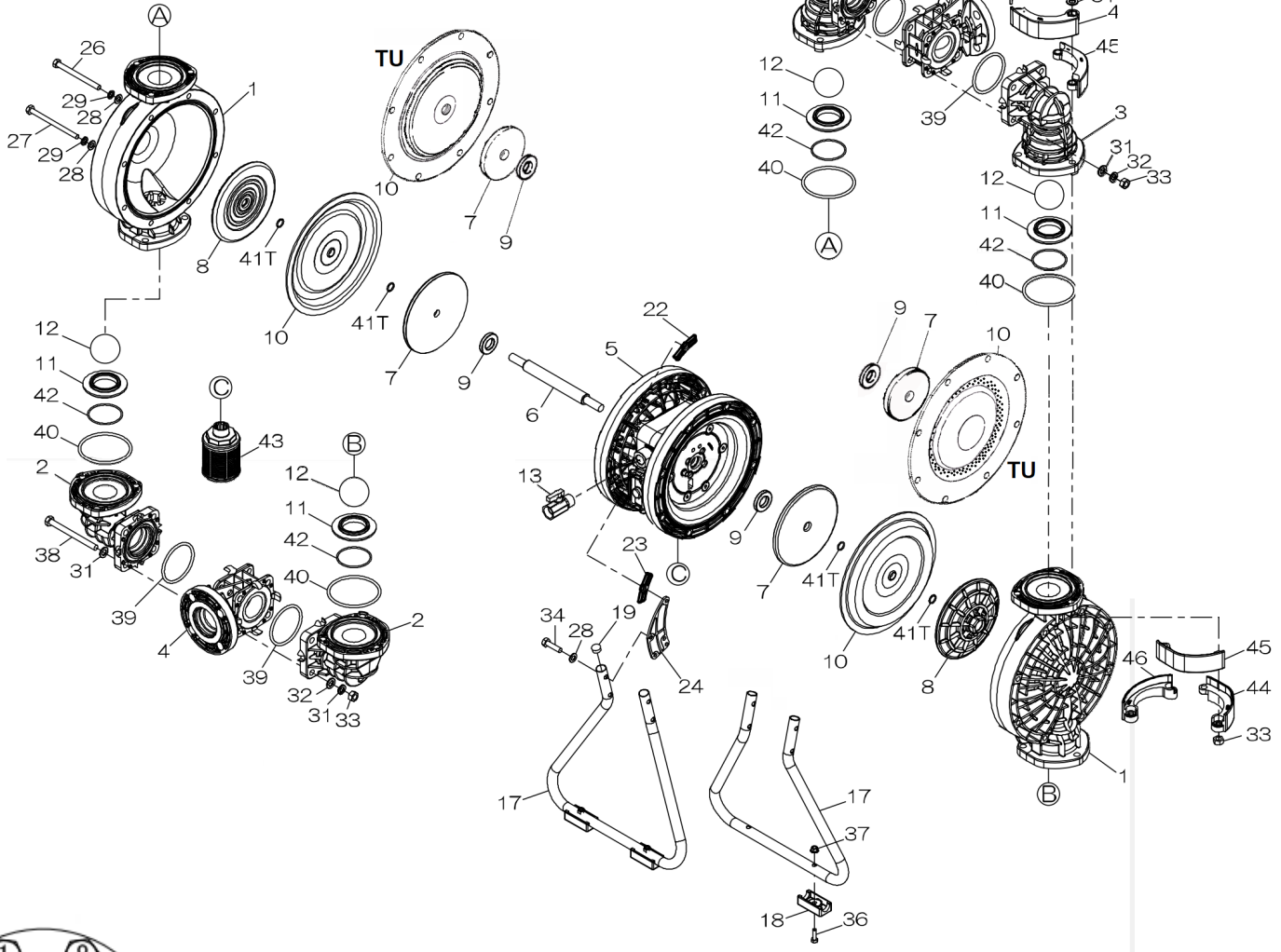
**713180—Sleeve remover**

Plastic hammer  
Sleeve remover  
VALVE BODY  
SLEEVE



**To Purchase:** 0031 (0)74 242 2032  
[sales@yamada.nl](mailto:sales@yamada.nl)

**More information:** YouTube: [@yamadapump](https://www.youtube.com/@yamadapump)  
[yamada-europe.com](http://www.yamada-europe.com)



**Tighting torque for:**

|                |            |
|----------------|------------|
| Center rod:    | 50 Nm      |
| Center rod TU: | Hand tight |
| Out chamber:   | 35 Nm      |
| Manifold:      | 25 Nm      |

**Special tools (sold seperately)**

|        |                |
|--------|----------------|
| 771868 | Disk remover   |
| 713180 | Sleeve remover |

**Miscellaneous:**

Assembly oil: use turbine oil none additional class 1  
 Equiv. to ISO VGA32 grade  
 Use Urea grease grade NLGI No. 2

# EXPLODED VIEW & PARTS LISTING

Model : NDP-P50BP.

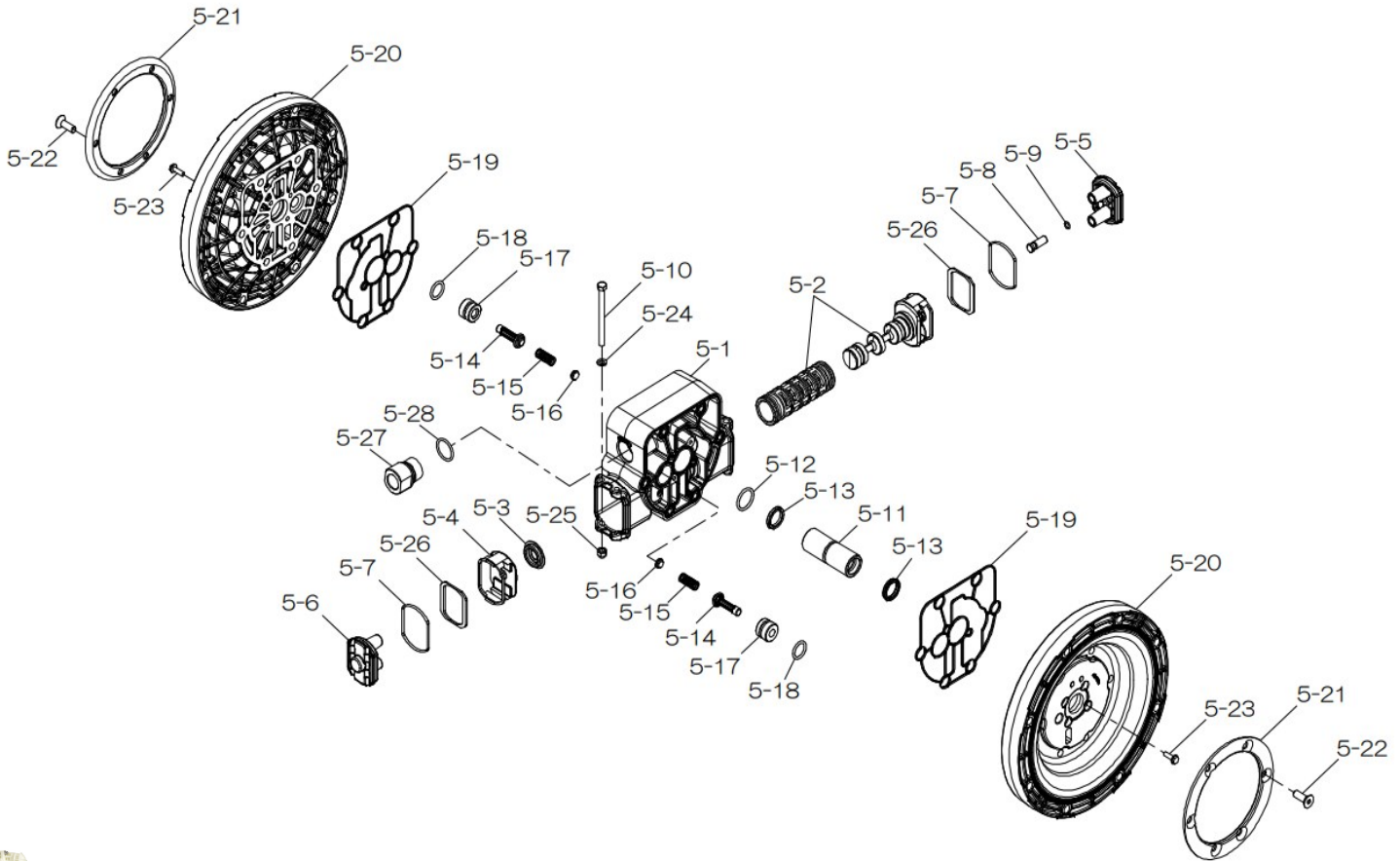
**Yamada** Europe B.V.



Air Operated Double Diaphragm pump

Material: PPG (Reinforced Polypropylene)

## Body Assembly



### DIAPHRAGM

Design #

| CR     | NBR    | EPDM   | HYTREL | SANTOPRENE | FPM    | PTFE   | PTFE-EPDM   |
|--------|--------|--------|--------|------------|--------|--------|-------------|
| BPC    | BPN    | BPE    | BPH    | BPS        | BPV    | BPT    | BPTU        |
| 854827 | 854828 | 854829 | 854832 | 854833     | 854830 | 854831 | YE Original |

| REF. No.   | DESCRIPTION           | Q'TY. | Part No.        |
|------------|-----------------------|-------|-----------------|
| 5          | BODY ASSY             | 1     | 805072          |
| 5-1        | VALVE BODY ASSY       | 1     | 833120          |
| 5-2        | C-SPOOL ASSY          | 1     | 805063          |
| 5-2-1      | O-RING SLEEVE         | 6     | 640037          |
| 5-3        | CUSHION               | 1     | 771923          |
| 5-4        | SPRING RETAINER       | 1     | 771735          |
| 5-5        | CAP A                 | 1     | 773249          |
| 5-6        | CAP B                 | 1     | 773250          |
| 5-7        | GASKET B              | 2     | 773252          |
| 5-8        | RESET BUTTON          | 1     | 773259          |
| 5-9        | O-RING                | 1     | 640005          |
| 5-10       | BOLT                  | 4     | 621167          |
| 5-11       | THROAT BEARING        | 1     | 773253          |
| 5-12       | O-RING                | 1     | 640027          |
| 5-13       | PACKING               | 2     | 685444          |
| 5-14       | PILOT VALVE ASSY      | 2     | 832162          |
| 5-15       | SPRING                | 2     | 711937          |
| 5-16       | SPRING SEAT           | 2     | 773257          |
| 5-17       | VALVE SEAT            | 2     | 773254          |
| 5-18       | O-RING                | 2     | 640020          |
| 5-19       | GASKET A              | 2     | 773251          |
| 5-20       | AIR CHAMBER           | 2     | 780294          |
| 5-21       | REINFORCEMENT PLATE   | 2     | 717073          |
| 5-22       | BOLT                  | 12    | 686748          |
| 5-23       | TAPPING SCREW         | 8     | 686747          |
| 5-24       | PLAIN WASHER          | 4     | 631173          |
| 5-25       | NUT                   | 4     | 686783          |
| 5-26       | SPACER                | 2     | 773334          |
| 5-27       | UNION                 | 1     | 773256          |
| 5-28       | O-RING                | 1     | 640131          |
| <b>KIT</b> | <b>AIR MOTOR</b>      |       | <b>KP50-AM</b>  |
| <b>KIT</b> | <b>AIR MOTOR SEAL</b> |       | <b>KP50-AMS</b> |

# EXPLODED VIEW & PARTS LISTING

## Air Operated Double Diaphragm pump

Model : NDP-P50BP.

**Yamada** Europe B.V.



Material: PPG (Reinforced Polypropylene)



### DIAPHRAGM

Design #

| CR     | NBR    | EPDM   | HYTREL | SANTOPRENE | FPM    | PTFE   | PTFE-EPDM   |
|--------|--------|--------|--------|------------|--------|--------|-------------|
| BPC    | BPN    | BPE    | BPH    | BPS        | BPV    | BPT    | BPTU        |
| 854827 | 854828 | 854829 | 854832 | 854833     | 854830 | 854831 | YE Original |

| REF. No. | DESCRIPTION        | Q'TY. | Part No. | Part No. | Part No. | Part No. | Part No. | Part No. | Part No. | Part No. | Part No. |
|----------|--------------------|-------|----------|----------|----------|----------|----------|----------|----------|----------|----------|
| 1        | OUT CHAMBER        | 2     | 780148   | 780148   | 780148   | 780148   | 780148   | 780148   | 780148   | 780148   | 780148   |
| 2        | IN MANIFOLD        | 2     | 780245   | 780245   | 780245   | 780245   | 780245   | 780245   | 780245   | 780245   | 780245   |
| 3        | OUT MANIFOLD       | 2     | 780151   | 780151   | 780151   | 780151   | 780151   | 780151   | 780151   | 780151   | 780151   |
| 4        | CENTER MANIFOLD    | 2     | 780249   | 780249   | 780249   | 780249   | 780249   | 780249   | 780249   | 780249   | 780249   |
| 5        | BODY ASSY          | 1     | 805072   | 805072   | 805072   | 805072   | 805072   | 805072   | 805072   | 805072   | 805072   |
| 6        | CENTER ROD         | 1     | 711900   | 711900   | 711900   | 711900   | 711900   | 711900   | 711900   | 711939   | 717130   |
| 7        | CENTER DISK        | 2     | 711905   | 711905   | 711905   | 711905   | 711905   | 711905   | 711905   | 707823   | 717133   |
| 8        | CENTER DISK        | 2     | 771727   | 771727   | 771727   | 771727   | 771727   | 771727   | 771727   | 780063   | —        |
| 9        | CUSHION            | 2     | 770582   | 770582   | 770582   | 770582   | 770582   | 770582   | 770582   | —        | 773435   |
| 10       | DIAPHRAGM          | 2     | 771855   | 771702   | 771856   | 771703   | 771976   | 771800   | 771800   | 770815   | 833220   |
| 11       | VALVE SEAT         | 4     | 772097   | 772097   | 772097   | 772097   | 772097   | 772097   | 772097   | 772097   | 772097   |
| 12       | BALL               | 4     | 770627   | 770630   | 770633   | 773143   | 773173   | 770636   | 770636   | 770693   | 770693   |
| 13       | VALVE              | 1     | 686973   | 686973   | 686973   | 686973   | 686973   | 686973   | 686973   | 686973   | 686973   |
| 17       | STAND              | 2     | 716885   | 716885   | 716885   | 716885   | 716885   | 716885   | 716885   | 716885   | 716885   |
| 18       | RUBBER FOOT        | 4     | 771865   | 771865   | 771865   | 771865   | 771865   | 771865   | 771865   | 771865   | 771865   |
| 19       | CAP                | 4     | 683641   | 683641   | 683641   | 683641   | 683641   | 683641   | 683641   | 683641   | 683641   |
| 22       | SUPPORTING PLATE A | 8     | 716883   | 716883   | 716883   | 716883   | 716883   | 716883   | 716883   | 716883   | 716883   |
| 23       | SUPPORTING PLATE B | 8     | 716884   | 716884   | 716884   | 716884   | 716884   | 716884   | 716884   | 716884   | 716884   |
| 24       | CONNECTING PLATE   | 4     | 717113   | 717113   | 717113   | 717113   | 717113   | 717113   | 717113   | 717113   | 717113   |
| 26       | BOLT               | 8     | 686696   | 686696   | 686696   | 686696   | 686696   | 686696   | 686696   | 686696   | 686696   |
| 27       | BOLT               | 8     | 686946   | 686946   | 686946   | 686946   | 686946   | 686946   | 686946   | 686946   | 686946   |
| 28       | PLAIN WASHER       | 24    | 631330   | 631330   | 631330   | 631330   | 631330   | 631330   | 631330   | 631330   | 631330   |
| 29       | SPRING WASHER      | 16    | 680257   | 680257   | 680257   | 680257   | 680257   | 680257   | 680257   | 680257   | 680257   |
| 30       | BOLT               | 12    | 621213   | 621213   | 621213   | 621213   | 621213   | 621213   | 621213   | 621213   | 621213   |
| 31       | PLAIN WASHER       | 28    | 631331   | 631331   | 631331   | 631331   | 631331   | 631331   | 631331   | 631331   | 631331   |
| 32       | SPRING WASHER      | 20    | 680607   | 680607   | 680607   | 680607   | 680607   | 680607   | 680607   | 680607   | 680607   |
| 33       | NUT                | 20    | 628014   | 628014   | 628014   | 628014   | 628014   | 628014   | 628014   | 628014   | 628014   |
| 34       | BOLT               | 8     | 621177   | 621177   | 621177   | 621177   | 621177   | 621177   | 621177   | 621177   | 621177   |
| 36       | BOLT               | 4     | 621149   | 621149   | 621149   | 621149   | 621149   | 621149   | 621149   | 621149   | 621149   |
| 37       | FLANGED NUT        | 4     | 683837   | 683837   | 683837   | 683837   | 683837   | 683837   | 683837   | 683837   | 683837   |
| 38       | BOLT               | 8     | 684592   | 684592   | 684592   | 684592   | 684592   | 684592   | 684592   | 684592   | 684592   |
| 39       | O RING             | 4     | 640064   | 640064   | 684121   | 640064   | 684121   | 642064   | 643064   | 643064   | 643064   |
| 40       | O RING             | 4     | 640069   | 640069   | 684122   | 640069   | 684122   | 642069   | 643069   | 643069   | 643069   |
| 41T      | O RING             | 4     | —        | —        | —        | —        | —        | —        | 643015   | —        | —        |
| 42       | O RING             | 4     | 640139   | 640139   | 685448   | 640139   | 685448   | 642139   | 643139   | 643139   | 643139   |
| 43       | MUFFLER            | 1     | 804764   | 804764   | 804764   | 804764   | 804764   | 804764   | 804764   | 804764   | 804764   |
| 44       | PROTECTOR A        | 8     | 771786   | 771786   | 771786   | 771786   | 771786   | 771786   | 771786   | 771786   | 771786   |
| 45       | PROTECTOR B        | 8     | 771787   | 771787   | 771787   | 771787   | 771787   | 771787   | 771787   | 771787   | 771787   |
| 46       | PROTECTOR C        | 8     | 771788   | 771788   | 771788   | 771788   | 771788   | 771788   | 771788   | 771788   | 771788   |
| KIT      | DIAPHRAGM          |       | K50D-PC  | K50D-PN  | K50D-PE  | K50D-PH  | K50D-PS  | K50D-PV  | K50D-PT  | K50D-TU  | K50D-TU  |
| KIT      | VALVE              |       | K50V-PC  | K50V-PN  | K50V-PE  | K50V-PH  | K50V-PS  | K50V-PV  | K50V-PT  | K50V-PT  | K50V-PT  |
| KIT      | WET END REPAIR     |       | K50-PC   | K50-PN   | K50-PE   | K50-PH   | K50-PS   | K50-PV   | K50-PT   | K50-PT   | K50-TU   |

# EXPLODED VIEW & PARTS LISTING

Model : NDP-P50BP.

**Yamada** Europe B.V.



## Air Operated Double Diaphragm pump



**MODEL : NDP-P50BP.**

Material: PPG (Reinforced Polypropylene)

|                     |                                                   |
|---------------------|---------------------------------------------------|
| Diaphragm options   | CR, NBR, EPDM, FPM, TPEE, TPO, PTFE, TU           |
| Max performance     | 630 L/min (PTFE 560 L/min, TU 580 L/min)          |
|                     | Equivalent to DIN; Flange DN50 PN10 + Inner Rc 2" |
|                     | ANSI Flange 150 2 + Inner                         |
| Manifold connection | Rc 2"                                             |
| Net Weight          | 37,0 kg (TU 34 kg)                                |

