

# Yamada

## TECHNICAL UPDATE

**TECHNICAL  
UPDATE  
November 2023**

### **Differences between pumps of G-series**

## **Differences between pumps of G-series**

Not all pumps of G-series are the same. Though they have the same construction they still have some differences, which might be confusing for those, who is not aware of them.

### **Diaphragms**

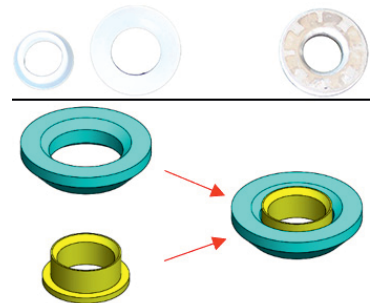
Plastic pumps G15P and G15V with PTFE diaphragms have additional backup diaphragms (so, two diaphragms per side and four in total per pump).

This is only relevant for pumps equipped with PTFE diaphragms! Meanwhile metal pumps – G15A and G15S – with PTFE diaphragms have no additional backup diaphragm. So, they have only 1 diaphragm per side and two in total per pump.



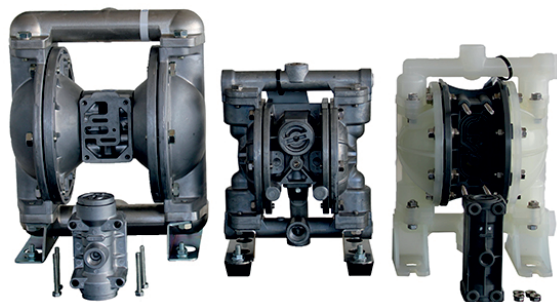
### **Ball guides**

G15P and G15V don't have separate ball guides, the ball guides are molded in the manifold and pump chambers. Meanwhile G15A and G15S have standard 3-piece check valve construction with separate ball guides, balls and seats.



### **Valve seats**

G15 plastic pump has 2-piece combined valve seats. Metal pumps of G-series have standard one-piece seats.



### **Air valve**

G15-series metal pumps have integral air valve, it is built in the air motor body. G25 and G15 plastic pumps have separate air valve, which can be detached from the pump body.



### **Anti-vibration rubber feet**

G25A pump does not have rubber feet. You can order them separately as follows: 770551 (rubber feet), 611148 (bolt), 682276 (nut). The same goes for G15P and G15V pumps: no rubber feet are included. You can also order them separately: 770551 (rubber feet), 611135 (bolt), 682276 (nut). However metal G15 pumps do come WITH rubber feet.



**Yamada Europe B.V.**

Aquamarijnstraat 50  
7554 NS Hengelo  
The Netherlands

**Phone:**  
+31 (0)74-2422032

**Fax:**  
+31 (0)74-2421055

**E-mail:**  
sales@  
yamada-europe.com



[www.yamada-europe.com](http://www.yamada-europe.com)